

LABOUR FORCE AUSTRALIA PRELIMINARY

EMBARGO: 11:30AM (CANBERRA TIME) THURS 12 FEB 1998

JANUARY KEY FIGURES

TREND ESTIMATES

	Dec 97	Jan 98	monthly change
Employed persons ('000)	8 509.8	8 526.6	0.2 %
Unemployed persons ('000)	764.2	756.4	-1.0 %
Unemployment rate (%)	8.2	8.1	-0.1 pts
Participation rate (%)	63.2	63.2	0.0 pts

SEASONALLY ADJUSTED

	Dec 97	Jan 98	monthly change
Employed persons ('000)	8 515.2	8 517.6	2.4
Unemployed persons ('000)	753.2	756.1	3.0
Unemployment rate (%)	8.1	8.2	0.0 pts
Participation rate (%)	63.2	63.2	0.0 pts

JANUARY KEY POINTS

TREND ESTIMATES

EMPLOYMENT

- continued to rise strongly to 8,526,600 in January 1998.

UNEMPLOYMENT

- has been falling steadily since April 1997 and was 756,400 in January 1998.

UNEMPLOYMENT RATE

- fell to 8.1% in January 1998, the lowest level since December 1990.

PARTICIPATION RATE

- remained at 63.2% in January 1998.

SEASONALLY ADJUSTED ESTIMATES

EMPLOYMENT

- remained relatively steady in January 1998 at 8,517,600. Full-time employment rose by 23,100 to 6,365,900 while part-time employment fell by 20,700, to 2,151,800.

UNEMPLOYMENT

- rose slightly to 756,100 with the number of males looking for work falling by 10,300 and the number of unemployed females rising by 13,200.

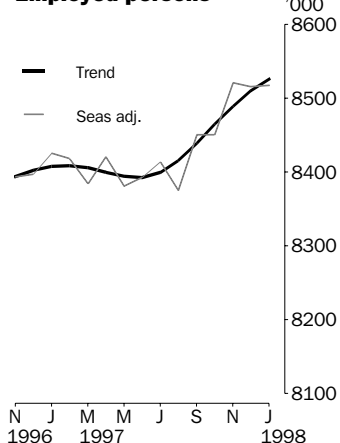
UNEMPLOYMENT RATE

- rose by less than 0.05 percentage points, but due to rounding was 8.2%. The male rate fell by 0.2 points to 8.2% and the female rate rose by 0.3 points to 8.1%.
- NSW 7.4% (7.3% last month); Vic 8.7% (8.1%); Qld 8.7% (9.1%); SA 10.0% (9.7%); WA 7.1% (7.3%); Tas 10.6% (12.0%).

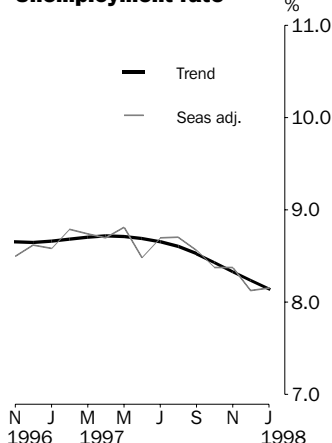
PARTICIPATION RATE

- remained at 63.2% in January 1998.

Employed persons



Unemployment rate



- For further information about these and related statistics, contact Donna Maurer on 02 6252 6525 or any ABS office.

NOTES

FORTHCOMING ISSUES

ISSUE	RELEASE DATE
February 1998	12 March 1998
March 1998	9 April 1998
April 1998	7 May 1998
May 1998	11 June 1998
June 1998	9 July 1998
July 1998	6 August 1998



CHANGES THIS MONTH

Following each Census of Population and Housing, the ABS selects a new sample for the Labour Force Survey. This is done to ensure that the sample continues to accurately represent the distribution of the Australian population. A new sample has recently been selected based on the 1996 Census. The bulk of the new sample is being phased in over the period September 1997 to April 1998, with one eighth of this portion of the sample being introduced each month. The remainder of the sample (about 15% of the total), which covers less settled areas of Australia and non-private dwellings, was rotated in fully in September 1997 for New South Wales, Victoria, Tasmania, Northern Territory and Australian Capital Territory and in October 1997 for Queensland, South Australia and Western Australia.

Detailed information about the new sample is provided in *Information Paper: Labour Force Survey Sample Design* (cat. no. 6291.0), which was released on 2 September 1997.



FORTHCOMING CHANGES

Seasonal factors for the Monthly Labour Force Survey are reviewed each February. Revised seasonally adjusted and trend data (up to January 1998) will be available on Thursday 5 March 1998, on PC Ausstats and on request. Seasonal factors (up to January 1999) will also be available on request. The February issue of this publication (to be released on Thursday 12 March 1998) will also contain revised seasonally adjusted and trend estimates. For further inquiries, contact Donna Maurer on 02 6252 6525.



ROUNDING

Estimates of monthly change shown on page 1 have been calculated using unrounded estimates, and may be different from, but are more accurate than, movements obtained from the rounded estimates. The graphs on page 1 also depict movements calculated from unrounded estimates.

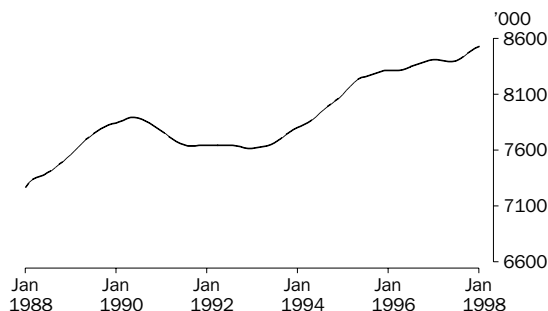


T.J. Skinner
Acting Australian Statistician

PRINCIPAL LABOUR FORCE SERIES: Trend estimates

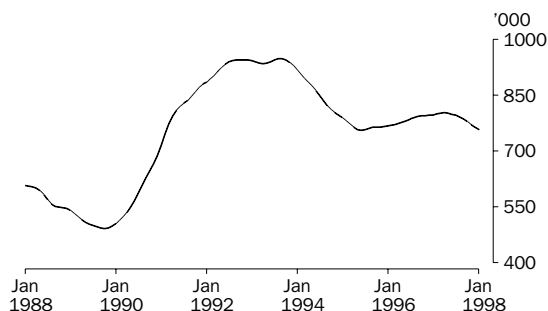
EMPLOYED PERSONS

From a low of 7,616,200 in January 1993, the trend estimate of employed persons rose strongly until mid 1995. This was followed by a period of slow growth with short periods of decline occurring in early 1996 and early 1997. In recent months, the trend estimate has risen strongly to 8,526,600 in January 1998.



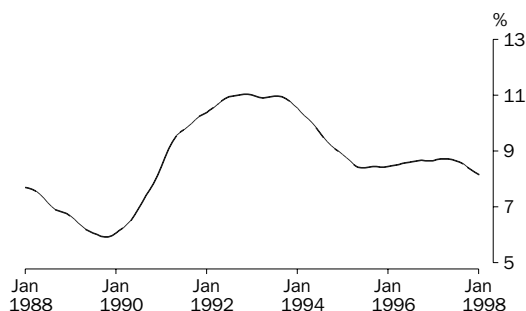
UNEMPLOYED PERSONS

The trend estimate of unemployment peaked at 947,800 in September 1993, before falling rapidly to 755,400 in June 1995. The trend then rose slowly for almost two years, reaching 802,400 in April 1997. Since then, the trend has been falling steadily, and was 756,400 in January 1998.



UNEMPLOYMENT RATE

From a high of 11.0% for most of 1992 and 1993, the trend unemployment rate fell steadily to 8.4% in May 1995. The trend then rose slowly to reach 8.7% in July 1997 but has since fallen steadily, to 8.1% in January 1998.

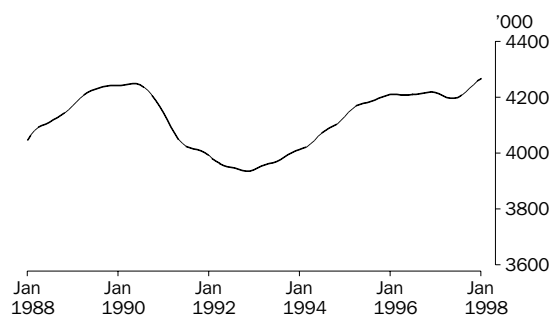


EMPLOYED PERSONS: Trend estimates

MALES EMPLOYED FULL TIME

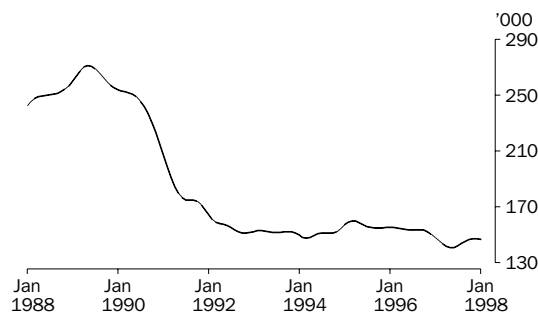
TOTAL

From a low of 3,936,200 in late 1992, the trend estimate of male full-time employment rose rapidly at first, then more slowly, to 4,218,400 in December 1996. The trend then fell slightly until mid 1997, before resuming to rise. The trend was 4,268,000 in January 1998.



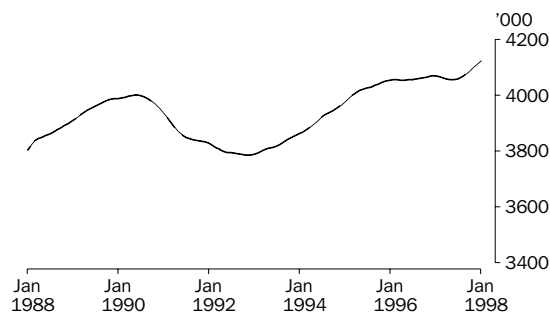
MALES AGED 15-19

The trend estimate for male teenage full-time employment has remained relatively steady for the past 5 years, following a sharp decline from the levels of the late 1980s. The trend recorded a low of 140,500 in May 1997. Since then, the trend estimate has risen only slightly, and was 146,400 in January 1998.



MALES AGED 20 AND OVER

From a low of 3,784,400 in December 1992, the trend estimate for male adult full-time employment rose steadily at first, then more slowly to 4,068,700 in January 1997. The trend estimate then dropped slightly before again rising steadily, to reach 4,121,600 in January 1998.

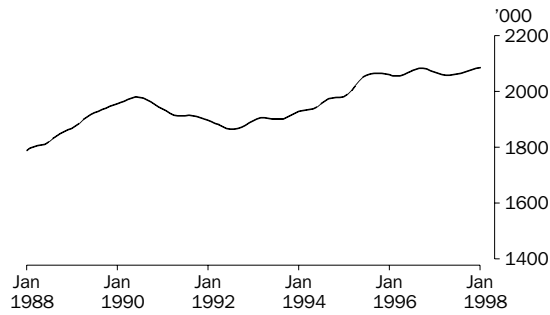


EMPLOYED PERSONS: Trend estimates

FEMALES EMPLOYED FULL TIME

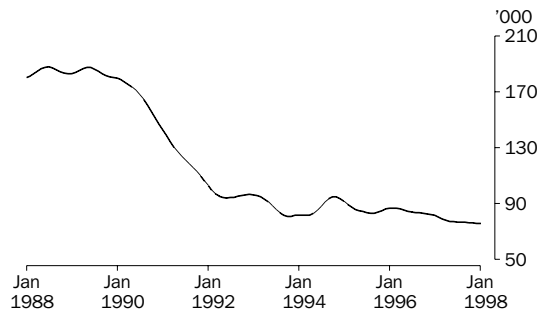
TOTAL

The trend estimate for female full-time employment generally rose steadily from a low of 1,863,800 in August 1992 to 2,082,800 in October 1996. The trend then fell to 2,058,600 in May 1997, before rising to 2,085,600 in January 1998.



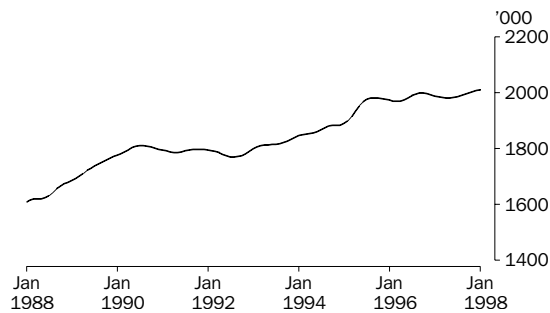
FEMALES AGED 15-19

After falling rapidly between 1989 and 1992, the trend estimate for female teenage full-time employment has remained at relatively low levels. Over the past few years, the trend estimate has been declining slowly, from 86,800 in February 1996 to 75,700 in January 1998.



FEMALES AGED 20 AND OVER

Over the past 10 years, female adult full-time employment has been increasing slowly. The trend estimate reached 2,000,000 in October 1996, before falling slightly over the next six months. Since then, the trend has again increased and was 2,009,800 in January 1998.



LABOUR FORCE STATUS (AGED 15 AND OVER): Original

Month	EMPLOYED.....			UNEMPLOYED.....			Labour force	Not in labour force	Civilian population aged 15 and over	Unemployment rate	Participation rate
	Full time	Part time	Total	Looking for f/t work	Looking for p/t work	Total					
	'000	'000	'000	'000	'000	'000	'000	'000	'000	%	%
MALES											
1996											
November	4 208.9	548.4	4 757.3	385.2	49.2	434.4	5 191.7	1 916.4	7 108.1	8.4	73.0
December	4 277.6	545.2	4 822.8	397.1	65.0	462.1	5 284.9	1 832.0	7 116.9	8.7	74.3
1997											
January	4 221.2	531.2	4 752.4	435.0	65.3	500.3	5 252.6	1 871.5	7 124.2	9.5	73.7
February	4 210.6	527.3	4 737.9	451.7	61.9	513.6	5 251.4	1 880.0	7 131.4	9.8	73.6
March	4 186.6	568.9	4 755.6	418.4	69.5	487.9	5 243.5	1 895.2	7 138.7	9.3	73.5
April	4 189.4	578.1	4 767.5	396.9	63.3	460.2	5 227.7	1 919.5	7 147.1	8.8	73.1
May	4 183.6	577.1	4 760.7	402.9	55.2	458.1	5 218.8	1 936.8	7 155.6	8.8	72.9
June	4 191.0	591.4	4 782.4	384.4	52.0	436.4	5 218.8	1 945.3	7 164.1	8.4	72.8
July	4 231.3	562.9	4 794.2	397.5	50.1	447.6	5 241.8	1 930.9	7 172.8	8.5	73.1
August	4 153.3	575.9	4 729.2	398.5	49.4	447.8	5 177.0	2 004.4	7 181.4	8.7	72.1
September	4 235.5	581.0	4 816.6	399.5	70.0	469.5	5 286.1	1 904.0	7 190.1	8.9	73.5
October	4 234.5	577.3	4 811.8	370.2	56.5	426.7	5 238.5	1 961.2	7 199.7	8.1	72.8
November	4 238.8	582.6	4 821.4	378.3	59.0	437.2	5 258.7	1 950.6	7 209.3	8.3	72.9
December	4 309.7	586.8	4 896.5	380.0	66.5	446.5	5 343.0	1 875.9	7 218.9	8.4	74.0
1998											
January	4 270.0	541.9	4 811.9	417.8	59.9	477.8	5 289.7	1 936.9	7 226.6	9.0	73.2
FEMALES											
1996											
November	2 075.0	1 560.2	3 635.2	204.5	98.4	302.9	3 938.0	3 396.3	7 334.3	7.7	53.7
December	2 122.5	1 551.2	3 673.7	231.1	112.4	343.5	4 017.2	3 326.8	7 344.1	8.6	54.7
1997											
January	2 071.8	1 472.1	3 543.9	251.2	102.3	353.5	3 897.5	3 454.5	7 352.0	9.1	53.0
February	2 067.3	1 544.8	3 612.1	262.8	129.8	392.5	4 004.6	3 355.3	7 359.9	9.8	54.4
March	2 044.9	1 592.8	3 637.7	234.8	122.7	357.4	3 995.2	3 372.6	7 367.8	8.9	54.2
April	2 054.1	1 589.6	3 643.7	230.6	108.8	339.4	3 983.1	3 393.4	7 376.5	8.5	54.0
May	2 051.9	1 576.7	3 628.6	220.8	113.0	333.8	3 962.4	3 422.8	7 385.2	8.4	53.7
June	2 031.6	1 604.1	3 635.8	215.6	98.7	314.4	3 950.1	3 443.8	7 393.9	8.0	53.4
July	2 092.2	1 565.7	3 657.9	207.2	96.1	303.3	3 961.2	3 441.4	7 402.6	7.7	53.5
August	2 025.0	1 561.3	3 586.3	213.9	102.9	316.8	3 903.1	3 508.3	7 411.4	8.1	52.7
September	2 084.6	1 625.2	3 709.8	213.3	110.2	323.5	4 033.3	3 386.8	7 420.1	8.0	54.4
October	2 072.2	1 579.8	3 652.1	208.1	101.7	309.8	3 961.8	3 467.4	7 429.2	7.8	53.3
November	2 081.6	1 618.5	3 700.0	204.2	95.3	299.6	3 999.6	3 438.7	7 438.3	7.5	53.8
December	2 133.9	1 584.9	3 718.8	218.0	99.1	317.1	4 035.9	3 411.5	7 447.4	7.9	54.2
1998											
January	2 085.9	1 488.5	3 574.4	236.0	103.1	339.1	3 913.6	3 540.8	7 454.3	8.7	52.5
PERSONS											
1996											
November	6 283.9	2 108.6	8 392.5	589.7	147.6	737.2	9 129.7	5 312.7	14 442.4	8.1	63.2
December	6 400.1	2 096.4	8 496.5	628.2	177.4	805.7	9 302.2	5 158.8	14 461.0	8.7	64.3
1997											
January	6 293.0	2 003.3	8 296.3	686.2	167.6	853.8	9 150.1	5 326.0	14 476.2	9.3	63.2
February	6 277.9	2 072.0	8 349.9	714.5	191.6	906.1	9 256.1	5 235.2	14 491.3	9.8	63.9
March	6 231.5	2 161.8	8 393.3	653.2	192.2	845.4	9 238.7	5 267.8	14 506.5	9.2	63.7
April	6 243.5	2 167.6	8 411.2	627.5	172.2	799.6	9 210.8	5 312.8	14 523.6	8.7	63.4
May	6 235.5	2 153.8	8 389.3	623.7	168.2	791.9	9 181.2	5 359.6	14 540.8	8.6	63.1
June	6 222.6	2 195.5	8 418.1	600.1	150.7	750.8	9 168.9	5 389.1	14 558.0	8.2	63.0
July	6 323.5	2 128.6	8 452.1	604.7	146.2	750.9	9 203.0	5 372.4	14 575.4	8.2	63.1
August	6 178.4	2 137.1	8 315.5	612.4	152.2	764.6	9 080.1	5 512.7	14 592.8	8.4	62.2
September	6 320.2	2 206.2	8 526.4	612.8	180.2	793.0	9 319.4	5 290.9	14 610.3	8.5	63.8
October	6 306.7	2 157.2	8 463.9	578.3	158.1	736.4	9 200.3	5 428.6	14 628.9	8.0	62.9
November	6 320.4	2 201.1	8 521.5	582.5	154.3	736.8	9 258.3	5 389.3	14 647.6	8.0	63.2
December	6 443.6	2 171.7	8 615.2	598.0	165.7	763.6	9 378.9	5 287.4	14 666.3	8.1	63.9
1998											
January	6 355.9	2 030.4	8 386.3	653.9	163.0	816.9	9 203.2	5 477.7	14 680.9	8.9	62.7

LABOUR FORCE STATUS (AGED 15 AND OVER): Seasonally adjusted

Month	EMPLOYED.....			UNEMPLOYED.....			Labour force '000	Unemp- loyment rate %	Partic- ipation rate %
	Full time '000	Part time '000	Total '000	Looking for f/t work '000	Looking for p/t work '000	Total '000			
MALES									
1996									
November	4 219.6	554.8	4 774.5	399.6	57.3	456.9	5 231.4	8.7	73.6
December	4 218.2	550.4	4 768.6	393.2	61.6	454.8	5 223.4	8.7	73.4
1997									
January	4 232.4	555.1	4 787.5	393.5	58.2	451.7	5 239.2	8.6	73.5
February	4 205.2	549.2	4 754.4	415.3	56.2	471.5	5 225.9	9.0	73.3
March	4 204.8	557.0	4 761.8	413.2	59.3	472.5	5 234.3	9.0	73.3
April	4 202.3	569.8	4 772.1	401.5	62.7	464.2	5 236.3	8.9	73.3
May	4 188.5	575.7	4 764.2	404.9	56.8	461.8	5 225.9	8.8	73.0
June	4 194.0	584.1	4 778.1	391.1	56.6	447.7	5 225.9	8.6	72.9
July	4 209.2	565.0	4 774.2	422.9	55.8	478.7	5 252.9	9.1	73.2
August	4 190.0	567.6	4 757.6	406.7	54.4	461.1	5 218.7	8.8	72.7
September	4 228.0	562.2	4 790.2	402.8	68.0	470.8	5 261.0	8.9	73.2
October	4 230.5	572.9	4 803.4	391.3	59.1	450.4	5 253.8	8.6	73.0
November	4 249.2	589.4	4 838.5	391.7	68.6	460.3	5 298.8	8.7	73.5
December	4 250.5	591.9	4 842.3	377.8	63.4	441.2	5 283.5	8.4	73.2
1998									
January	4 281.8	566.3	4 848.1	377.5	53.4	430.9	5 279.1	8.2	73.1
FEMALES									
1996									
November	2 074.8	1 544.3	3 619.2	219.2	103.2	322.4	3 941.6	8.2	53.7
December	2 080.5	1 547.6	3 628.1	224.8	112.3	337.1	3 965.2	8.5	54.0
1997									
January	2 068.5	1 569.0	3 637.5	230.7	108.5	339.2	3 976.7	8.5	54.1
February	2 071.6	1 591.9	3 663.5	227.1	112.2	339.2	4 002.8	8.5	54.4
March	2 041.5	1 580.7	3 622.2	224.5	106.0	330.5	3 952.7	8.4	53.6
April	2 072.5	1 576.6	3 649.0	231.3	106.9	338.2	3 987.2	8.5	54.1
May	2 063.2	1 553.5	3 616.7	230.5	117.6	348.1	3 964.7	8.8	53.7
June	2 040.7	1 573.8	3 614.6	223.9	106.3	330.1	3 944.7	8.4	53.4
July	2 078.1	1 561.7	3 639.8	217.5	105.0	322.5	3 962.3	8.1	53.5
August	2 059.7	1 558.5	3 618.3	225.3	112.2	337.6	3 955.8	8.5	53.4
September	2 076.5	1 584.0	3 660.5	217.4	103.3	320.7	3 981.1	8.1	53.7
October	2 064.0	1 582.9	3 647.0	218.7	103.6	322.3	3 969.3	8.1	53.4
November	2 080.5	1 602.2	3 682.7	218.7	99.9	318.6	4 001.3	8.0	53.8
December	2 092.3	1 580.6	3 672.9	212.9	99.1	311.9	3 984.8	7.8	53.5
1998									
January	2 084.1	1 585.5	3 669.5	216.0	109.2	325.2	3 994.7	8.1	53.6
PERSONS									
1996									
November	6 294.5	2 099.2	8 393.6	618.8	160.5	779.3	9 172.9	8.5	63.5
December	6 298.7	2 098.0	8 396.7	618.0	173.9	791.9	9 188.6	8.6	63.5
1997									
January	6 300.9	2 124.1	8 425.1	624.2	166.7	790.9	9 215.9	8.6	63.7
February	6 276.8	2 141.1	8 417.9	642.4	168.4	810.8	9 228.7	8.8	63.7
March	6 246.4	2 137.7	8 384.0	637.7	165.3	803.0	9 187.0	8.7	63.3
April	6 274.8	2 146.4	8 421.1	632.8	169.5	802.3	9 223.5	8.7	63.5
May	6 251.7	2 129.1	8 380.8	635.4	174.4	809.8	9 190.7	8.8	63.2
June	6 234.8	2 158.0	8 392.7	615.0	162.9	777.8	9 170.6	8.5	63.0
July	6 287.3	2 126.7	8 414.0	640.4	160.8	801.2	9 215.2	8.7	63.2
August	6 249.8	2 126.1	8 375.9	632.1	166.6	798.7	9 174.6	8.7	62.9
September	6 304.5	2 146.1	8 450.6	620.2	171.3	791.5	9 242.1	8.6	63.3
October	6 294.6	2 155.8	8 450.4	610.0	162.7	772.7	9 223.1	8.4	63.0
November	6 329.7	2 191.6	8 521.2	610.4	168.5	778.9	9 300.1	8.4	63.5
December	6 342.8	2 172.5	8 515.2	590.7	162.5	753.2	9 268.4	8.1	63.2
1998									
January	6 365.9	2 151.8	8 517.6	593.5	162.6	756.1	9 273.8	8.2	63.2

LABOUR FORCE STATUS (AGED 15 AND OVER): Trend(a)

Month	EMPLOYED.....			UNEMPLOYED.....			Labour force '000	Unemp- loyment rate %	Partic- ipation rate %
	Full time '000	Part time '000	Total '000	Looking for f/t work '000	Looking for p/t work '000	Total '000			
MALES									
1996									
November	4 217.4	549.6	4 767.1	403.8	59.1	462.9	5 230.0	8.9	73.6
December	4 218.4	550.8	4 769.2	402.7	59.1	461.8	5 231.0	8.8	73.5
1997									
January	4 216.5	553.0	4 769.5	402.4	59.1	461.5	5 231.0	8.8	73.4
February	4 212.3	556.8	4 769.1	403.2	59.1	462.4	5 231.4	8.8	73.4
March	4 206.0	562.0	4 768.0	404.8	58.8	463.5	5 231.5	8.9	73.3
April	4 199.6	567.2	4 766.8	406.2	58.2	464.4	5 231.1	8.9	73.2
May	4 195.5	570.6	4 766.1	407.0	57.6	464.6	5 230.6	8.9	73.1
June	4 195.5	571.6	4 767.1	407.1	57.4	464.4	5 231.5	8.9	73.0
July	4 199.6	571.5	4 771.1	406.5	58.1	464.5	5 235.6	8.9	73.0
August	4 208.0	571.4	4 779.4	404.6	59.4	464.1	5 243.5	8.9	73.0
September	4 219.3	572.4	4 791.8	401.0	61.0	462.1	5 253.8	8.8	73.1
October	4 232.3	574.9	4 807.2	395.4	62.3	457.6	5 264.8	8.7	73.1
November	4 245.3	577.7	4 823.0	389.1	62.6	451.7	5 274.7	8.6	73.2
December	4 257.5	579.7	4 837.2	383.4	62.1	445.5	5 282.7	8.4	73.2
1998									
January	4 268.0	581.8	4 849.7	377.2	61.2	438.4	5 288.1	8.3	73.2
FEMALES									
1996									
November	2 079.6	1 546.6	3 626.2	224.3	108.0	332.4	3 958.6	8.4	54.0
December	2 074.8	1 558.3	3 633.1	225.4	108.4	333.7	3 966.8	8.4	54.0
1997									
January	2 069.5	1 568.4	3 637.8	226.5	108.9	335.5	3 973.3	8.4	54.0
February	2 065.0	1 574.8	3 639.8	227.8	109.5	337.2	3 977.0	8.5	54.0
March	2 061.3	1 576.6	3 637.9	228.4	109.8	338.2	3 976.1	8.5	54.0
April	2 059.0	1 574.1	3 633.1	228.1	109.9	338.0	3 971.1	8.5	53.8
May	2 058.6	1 569.4	3 628.1	226.8	109.8	336.6	3 964.6	8.5	53.7
June	2 059.8	1 565.9	3 625.6	225.0	109.3	334.3	3 959.9	8.4	53.6
July	2 062.3	1 566.1	3 628.4	223.0	108.3	331.3	3 959.7	8.4	53.5
August	2 065.8	1 570.5	3 636.4	221.1	106.6	327.7	3 964.1	8.3	53.5
September	2 069.9	1 576.9	3 646.8	219.4	104.9	324.2	3 971.1	8.2	53.5
October	2 074.7	1 582.5	3 657.2	218.1	103.5	321.6	3 978.8	8.1	53.6
November	2 079.3	1 586.6	3 665.9	217.0	102.8	319.8	3 985.7	8.0	53.6
December	2 083.5	1 589.1	3 672.6	216.0	102.7	318.7	3 991.3	8.0	53.6
1998									
January	2 085.6	1 591.2	3 676.8	215.2	102.8	318.0	3 994.8	8.0	53.6
PERSONS									
1996									
November	6 297.1	2 096.2	8 393.3	628.1	167.2	795.3	9 188.6	8.7	63.6
December	6 293.2	2 109.1	8 402.3	628.1	167.5	795.5	9 197.8	8.6	63.6
1997									
January	6 286.0	2 121.3	8 407.4	628.9	168.1	797.0	9 204.3	8.7	63.6
February	6 277.3	2 131.6	8 408.9	631.0	168.6	799.6	9 208.4	8.7	63.5
March	6 267.2	2 138.6	8 405.9	633.2	168.6	801.7	9 207.6	8.7	63.5
April	6 258.6	2 141.3	8 399.9	634.3	168.1	802.4	9 202.3	8.7	63.4
May	6 254.1	2 140.0	8 394.1	633.8	167.4	801.1	9 195.3	8.7	63.2
June	6 255.3	2 137.5	8 392.7	632.1	166.7	798.7	9 191.5	8.7	63.1
July	6 261.9	2 137.6	8 399.5	629.5	166.3	795.8	9 195.3	8.7	63.1
August	6 273.8	2 142.0	8 415.8	625.8	166.1	791.8	9 207.6	8.6	63.1
September	6 289.3	2 149.3	8 438.6	620.4	165.9	786.3	9 224.9	8.5	63.1
October	6 307.0	2 157.4	8 464.4	613.5	165.8	779.2	9 243.6	8.4	63.2
November	6 324.6	2 164.3	8 488.8	606.1	165.4	771.5	9 260.3	8.3	63.2
December	6 341.0	2 168.8	8 509.8	599.3	164.8	764.2	9 274.0	8.2	63.2
1998									
January	6 353.6	2 173.0	8 526.6	592.4	164.0	756.4	9 283.0	8.1	63.2

(a) Estimates for July 1997 to December 1997 have been revised.

UNEMPLOYED PERSONS: Original

Month	NUMBER OF UNEMPLOYED PERSONS.....					UNEMPLOYMENT RATE.....					UNEMPLOYMENT TO POPULATION RATIO	
	Aged 15-19 looking for f/t work	Aged 20 and over looking for f/t work	Total looking for f/t work	Looking for p/t work	Total	Aged 15-19 looking for f/t work	Aged 20 and over looking for f/t work	Total looking for f/t work	Looking for p/t work	Total	Aged 15-19 looking for f/t work	Aged 20 and over looking for f/t work
	'000	'000	'000	'000	'000	%	%	%	%	%	%	%
MALES												
1996												
November	50.6	334.5	385.2	49.2	434.4	26.4	7.6	8.4	8.2	8.4	7.7	5.2
December	67.3	329.8	397.1	65.0	462.1	29.3	7.4	8.5	10.7	8.7	10.3	5.1
1997												
January	60.5	374.5	435.0	65.3	500.3	26.7	8.5	9.3	10.9	9.5	9.2	5.8
February	62.6	389.1	451.7	61.9	513.6	29.1	8.7	9.7	10.5	9.8	9.5	6.0
March	55.2	363.2	418.4	69.5	487.9	28.4	8.2	9.1	10.9	9.3	8.4	5.6
April	50.2	346.7	396.9	63.3	460.2	25.3	7.9	8.7	9.9	8.8	7.6	5.3
May	51.8	351.1	402.9	55.2	458.1	27.7	8.0	8.8	8.7	8.8	7.9	5.4
June	47.9	336.5	384.4	52.0	436.4	26.7	7.7	8.4	8.1	8.4	7.3	5.2
July	47.1	350.5	397.5	50.1	447.6	24.5	7.9	8.6	8.2	8.5	7.1	5.4
August	44.4	354.1	398.5	49.4	447.8	25.1	8.1	8.8	7.9	8.7	6.7	5.4
September	44.7	354.8	399.5	70.0	469.5	24.0	8.0	8.6	10.8	8.9	6.8	5.4
October	44.7	325.5	370.2	56.5	426.7	23.3	7.4	8.0	8.9	8.1	6.8	5.0
November	43.7	334.5	378.3	59.0	437.2	23.9	7.5	8.2	9.2	8.3	6.6	5.1
December	56.9	323.1	380.0	66.5	446.5	27.2	7.2	8.1	10.2	8.4	8.6	4.9
1998												
January	59.2	358.6	417.8	59.9	477.8	26.9	8.0	8.9	10.0	9.0	8.9	5.5
FEMALES												
1996												
November	35.6	168.9	204.5	98.4	302.9	31.3	7.8	9.0	5.9	7.7	5.7	2.5
December	51.7	179.4	231.1	112.4	343.5	36.6	8.1	9.8	6.8	8.6	8.3	2.7
1997												
January	48.8	202.4	251.2	102.3	353.5	34.1	9.3	10.8	6.5	9.1	7.8	3.0
February	40.6	222.2	262.8	129.8	392.5	32.7	10.1	11.3	7.8	9.8	6.5	3.3
March	36.5	198.3	234.8	122.7	357.4	32.3	9.2	10.3	7.1	8.9	5.8	2.9
April	35.3	195.3	230.6	108.8	339.4	32.3	9.0	10.1	6.4	8.5	5.6	2.9
May	30.3	190.5	220.8	113.0	333.8	29.3	8.8	9.7	6.7	8.4	4.8	2.8
June	31.6	184.1	215.6	98.7	314.4	31.5	8.6	9.6	5.8	8.0	5.0	2.7
July	28.4	178.8	207.2	96.1	303.3	25.5	8.2	9.0	5.8	7.7	4.5	2.6
August	30.5	183.4	213.9	102.9	316.8	29.7	8.6	9.6	6.2	8.1	4.9	2.7
September	29.7	183.6	213.3	110.2	323.5	28.0	8.4	9.3	6.3	8.0	4.7	2.7
October	30.9	177.2	208.1	101.7	309.8	28.6	8.2	9.1	6.0	7.8	4.9	2.6
November	34.1	170.2	204.2	95.3	299.6	33.6	7.8	8.9	5.6	7.5	5.4	2.5
December	45.1	172.9	218.0	99.1	317.1	34.5	7.8	9.3	5.9	7.9	7.1	2.5
1998												
January	52.3	183.8	236.0	103.1	339.1	36.9	8.4	10.2	6.5	8.7	8.3	2.7
PERSONS												
1996												
November	86.3	503.4	589.7	147.6	737.2	28.2	7.7	8.6	6.5	8.1	6.7	3.8
December	119.0	509.2	628.2	177.4	805.7	32.1	7.6	8.9	7.8	8.7	9.3	3.9
1997												
January	109.3	576.9	686.2	167.6	853.8	29.6	8.7	9.8	7.7	9.3	8.5	4.4
February	103.2	611.2	714.5	191.6	906.1	30.4	9.2	10.2	8.5	9.8	8.1	4.6
March	91.7	561.5	653.2	192.2	845.4	29.8	8.5	9.5	8.2	9.2	7.1	4.2
April	85.5	542.0	627.5	172.2	799.6	27.8	8.3	9.1	7.4	8.7	6.7	4.1
May	82.0	541.7	623.7	168.2	791.9	28.3	8.2	9.1	7.2	8.6	6.4	4.1
June	79.5	520.6	600.1	150.7	750.8	28.4	8.0	8.8	6.4	8.2	6.2	3.9
July	75.4	529.3	604.7	146.2	750.9	24.9	8.0	8.7	6.4	8.2	5.9	4.0
August	74.9	537.5	612.4	152.2	764.6	26.8	8.3	9.0	6.6	8.4	5.8	4.0
September	74.5	538.4	612.8	180.2	793.0	25.4	8.1	8.8	7.6	8.5	5.8	4.0
October	75.6	502.7	578.3	158.1	736.4	25.2	7.6	8.4	6.8	8.0	5.9	3.8
November	77.8	504.7	582.5	154.3	736.8	27.4	7.6	8.4	6.6	8.0	6.0	3.8
December	102.0	496.0	598.0	165.7	763.6	30.0	7.4	8.5	7.1	8.1	7.9	3.7
1998												
January	111.5	542.4	653.9	163.0	816.9	30.8	8.2	9.3	7.4	8.9	8.6	4.1

UNEMPLOYED PERSONS: Seasonally adjusted

Month	NUMBER OF UNEMPLOYED PERSONS....					UNEMPLOYMENT RATE.....					UNEMPLOYMENT TO POPULATION RATIO	
	Aged 15-19 looking for f/t work	Aged 20 and over looking for f/t work	Total looking for f/t work	Looking for p/t work	Total	Aged 15-19 looking for f/t work	Aged 20 and over looking for f/t work	Total looking for f/t work	Looking for p/t work	Total	Aged 15-19 looking for f/t work	Aged 20 and over looking for f/t work
	'000	'000	'000	'000	'000	%	%	%	%	%	%	%
MALES												
1996												
November	56.2	343.4	399.6	57.3	456.9	27.1	7.8	8.7	9.4	8.7	8.6	5.3
December	57.2	336.1	393.2	61.6	454.8	27.6	7.6	8.5	10.1	8.7	8.7	5.2
1997												
January	48.9	344.6	393.5	58.2	451.7	24.4	7.8	8.5	9.5	8.6	7.4	5.3
February	54.2	361.2	415.3	56.2	471.5	27.3	8.2	9.0	9.3	9.0	8.2	5.6
March	56.1	357.1	413.2	59.3	472.5	28.8	8.1	8.9	9.6	9.0	8.5	5.5
April	50.3	351.2	401.5	62.7	464.2	25.5	8.0	8.7	9.9	8.9	7.6	5.4
May	50.8	354.2	404.9	56.8	461.8	26.5	8.0	8.8	9.0	8.8	7.7	5.5
June	48.5	342.6	391.1	56.6	447.7	26.2	7.8	8.5	8.8	8.6	7.4	5.3
July	54.9	368.0	422.9	55.8	478.7	27.7	8.3	9.1	9.0	9.1	8.3	5.7
August	49.2	357.5	406.7	54.4	461.1	25.9	8.1	8.8	8.7	8.8	7.5	5.5
September	49.9	352.9	402.8	68.0	470.8	25.5	8.0	8.7	10.8	8.9	7.6	5.4
October	50.5	340.9	391.3	59.1	450.4	24.9	7.7	8.5	9.4	8.6	7.6	5.2
November	48.4	343.3	391.7	68.6	460.3	24.5	7.7	8.4	10.4	8.7	7.3	5.2
December	48.3	329.5	377.8	63.4	441.2	25.6	7.4	8.2	9.7	8.4	7.3	5.0
1998												
January	47.8	329.8	377.5	53.4	430.9	24.5	7.4	8.1	8.6	8.2	7.2	5.0
FEMALES												
1996												
November	41.0	178.2	219.2	103.2	322.4	33.0	8.2	9.6	6.3	8.2	6.6	2.7
December	42.0	182.8	224.8	112.3	337.1	34.3	8.4	9.8	6.8	8.5	6.7	2.7
1997												
January	39.8	190.9	230.7	108.5	339.2	32.5	8.8	10.0	6.5	8.5	6.4	2.8
February	33.3	193.8	227.1	112.2	339.2	29.3	8.9	9.9	6.6	8.5	5.3	2.9
March	35.5	189.0	224.5	106.0	330.5	30.4	8.8	9.9	6.3	8.4	5.7	2.8
April	38.1	193.2	231.3	106.9	338.2	33.1	8.8	10.0	6.3	8.5	6.1	2.9
May	31.4	199.0	230.5	117.6	348.1	29.3	9.1	10.0	7.0	8.8	5.0	2.9
June	33.2	190.6	223.9	106.3	330.1	31.2	8.8	9.9	6.3	8.4	5.3	2.8
July	31.0	186.5	217.5	105.0	322.5	27.9	8.5	9.5	6.3	8.1	4.9	2.8
August	33.2	192.1	225.3	112.2	337.6	29.8	8.8	9.9	6.7	8.5	5.3	2.8
September	32.6	184.8	217.4	103.3	320.7	29.5	8.5	9.5	6.1	8.1	5.2	2.7
October	36.9	181.8	218.7	103.6	322.3	32.8	8.4	9.6	6.1	8.1	5.9	2.7
November	39.2	179.6	218.7	99.9	318.6	35.4	8.2	9.5	5.9	8.0	6.2	2.6
December	36.6	176.3	212.9	99.1	311.9	32.2	8.0	9.2	5.9	7.8	5.8	2.6
1998												
January	42.7	173.3	216.0	109.2	325.2	35.3	8.0	9.4	6.4	8.1	6.8	2.5
PERSONS												
1996												
November	97.1	521.6	618.8	160.5	779.3	29.3	7.9	9.0	7.1	8.5	7.6	4.0
December	99.2	518.9	618.0	173.9	791.9	30.1	7.9	8.9	7.7	8.6	7.7	3.9
1997												
January	88.7	535.5	624.2	166.7	790.9	27.4	8.1	9.0	7.3	8.6	6.9	4.1
February	87.4	555.0	642.4	168.4	810.8	28.0	8.4	9.3	7.3	8.8	6.8	4.2
March	91.6	546.1	637.7	165.3	803.0	29.4	8.3	9.3	7.2	8.7	7.1	4.1
April	88.4	544.4	632.8	169.5	802.3	28.3	8.3	9.2	7.3	8.7	6.9	4.1
May	82.2	553.2	635.4	174.4	809.8	27.5	8.4	9.2	7.6	8.8	6.4	4.2
June	81.8	533.2	615.0	162.9	777.8	28.0	8.1	9.0	7.0	8.5	6.4	4.0
July	85.9	554.5	640.4	160.8	801.2	27.8	8.4	9.2	7.0	8.7	6.7	4.2
August	82.4	549.6	632.1	166.6	798.7	27.3	8.4	9.2	7.3	8.7	6.4	4.1
September	82.5	537.7	620.2	171.3	791.5	26.9	8.1	9.0	7.4	8.6	6.4	4.0
October	87.3	522.7	610.0	162.7	772.7	27.7	7.9	8.8	7.0	8.4	6.8	3.9
November	87.6	522.8	610.4	168.5	778.9	28.4	7.9	8.8	7.1	8.4	6.8	3.9
December	85.0	505.7	590.7	162.5	753.2	28.1	7.6	8.5	7.0	8.1	6.6	3.8
1998												
January	90.5	503.0	593.5	162.6	756.1	28.7	7.6	8.5	7.0	8.2	7.0	3.8

UNEMPLOYED PERSONS: Trend(a)

Month	NUMBER OF UNEMPLOYED PERSONS.....					UNEMPLOYMENT RATE.....					UNEMPLOYMENT TO POPULATION RATIO	
	Aged 15-19 looking for f/t work	Aged 20 and over looking for f/t work	Total looking for f/t work	Looking for p/t work	Total	Aged 15-19 looking for f/t work	Aged 20 and over looking for f/t work	Total looking for f/t work	Looking for p/t work	Total	Aged 15-19 looking for f/t work	Aged 20 and over looking for f/t work
	'000	'000	'000	'000	'000	%	%	%	%	%	%	%
MALES												
1996												
November	55.0	348.8	403.8	59.1	462.9	26.6	7.9	8.7	9.7	8.9	8.4	5.4
December	54.8	347.9	402.7	59.1	461.8	26.7	7.9	8.7	9.7	8.8	8.3	5.4
1997												
January	54.1	348.3	402.4	59.1	461.5	26.8	7.9	8.7	9.7	8.8	8.2	5.4
February	53.3	349.9	403.2	59.1	462.4	26.8	7.9	8.7	9.6	8.8	8.1	5.4
March	52.5	352.2	404.8	58.8	463.5	26.8	8.0	8.8	9.5	8.9	8.0	5.4
April	51.9	354.3	406.2	58.2	464.4	26.8	8.0	8.8	9.3	8.9	7.9	5.5
May	51.5	355.5	407.0	57.6	464.6	26.8	8.1	8.8	9.2	8.9	7.8	5.5
June	51.2	355.9	407.1	57.4	464.4	26.7	8.1	8.8	9.1	8.9	7.8	5.5
July	50.8	355.6	406.5	58.1	464.5	26.4	8.1	8.8	9.2	8.9	7.7	5.5
August	50.5	354.1	404.6	59.4	464.1	26.0	8.0	8.8	9.4	8.9	7.6	5.4
September	50.2	350.8	401.0	61.0	462.1	25.7	7.9	8.7	9.6	8.8	7.6	5.4
October	49.6	345.7	395.4	62.3	457.6	25.3	7.8	8.5	9.8	8.7	7.5	5.3
November	49.0	340.1	389.1	62.6	451.7	25.0	7.7	8.4	9.8	8.6	7.4	5.2
December	48.4	334.9	383.4	62.1	445.5	24.8	7.5	8.3	9.7	8.4	7.3	5.1
1998												
January	47.7	329.4	377.2	61.2	438.4	24.6	7.4	8.1	9.5	8.3	7.2	5.0
FEMALES												
1996												
November	40.6	183.7	224.3	108.0	332.4	33.0	8.4	9.7	6.5	8.4	6.5	2.7
December	40.2	185.1	225.4	108.4	333.7	32.9	8.5	9.8	6.5	8.4	6.4	2.8
1997												
January	39.0	187.5	226.5	108.9	335.5	32.4	8.6	9.9	6.5	8.4	6.2	2.8
February	37.4	190.4	227.8	109.5	337.2	31.7	8.8	9.9	6.5	8.5	6.0	2.8
March	35.8	192.7	228.4	109.8	338.2	31.1	8.9	10.0	6.5	8.5	5.7	2.9
April	34.4	193.8	228.1	109.9	338.0	30.6	8.9	10.0	6.5	8.5	5.5	2.9
May	33.2	193.6	226.8	109.8	336.6	30.1	8.9	9.9	6.5	8.5	5.3	2.9
June	32.6	192.4	225.0	109.3	334.3	29.8	8.8	9.8	6.5	8.4	5.2	2.8
July	32.5	190.6	223.0	108.3	331.3	29.7	8.8	9.8	6.5	8.4	5.2	2.8
August	33.0	188.1	221.1	106.6	327.7	30.1	8.6	9.7	6.4	8.3	5.3	2.8
September	34.2	185.2	219.4	104.9	324.2	30.9	8.5	9.6	6.2	8.2	5.4	2.7
October	35.8	182.3	218.1	103.5	321.6	32.0	8.4	9.5	6.1	8.1	5.7	2.7
November	37.5	179.5	217.0	102.8	319.8	33.1	8.2	9.4	6.1	8.0	5.9	2.6
December	39.0	176.9	216.0	102.7	318.7	34.0	8.1	9.4	6.1	8.0	6.2	2.6
1998												
January	40.5	174.7	215.2	102.8	318.0	34.8	8.0	9.4	6.1	8.0	6.4	2.6
PERSONS												
1996												
November	95.7	532.5	628.1	167.2	795.3	29.0	8.1	9.1	7.4	8.7	7.5	4.0
December	95.0	533.1	628.1	167.5	795.5	29.0	8.1	9.1	7.4	8.6	7.4	4.0
1997												
January	93.1	535.8	628.9	168.1	797.0	28.9	8.1	9.1	7.3	8.7	7.3	4.1
February	90.7	540.3	631.0	168.6	799.6	28.6	8.2	9.1	7.3	8.7	7.1	4.1
March	88.3	544.9	633.2	168.6	801.7	28.4	8.3	9.2	7.3	8.7	6.9	4.1
April	86.2	548.1	634.3	168.1	802.4	28.2	8.3	9.2	7.3	8.7	6.7	4.1
May	84.7	549.1	633.8	167.4	801.1	28.0	8.3	9.2	7.3	8.7	6.6	4.1
June	83.8	548.3	632.1	166.7	798.7	27.8	8.3	9.2	7.2	8.7	6.5	4.1
July	83.3	546.2	629.5	166.3	795.8	27.6	8.3	9.1	7.2	8.7	6.5	4.1
August	83.5	542.3	625.8	166.1	791.8	27.5	8.2	9.1	7.2	8.6	6.5	4.1
September	84.4	536.0	620.4	165.9	786.3	27.6	8.1	9.0	7.2	8.5	6.5	4.0
October	85.5	528.0	613.5	165.8	779.2	27.7	8.0	8.9	7.1	8.4	6.6	4.0
November	86.5	519.6	606.1	165.4	771.5	28.0	7.8	8.7	7.1	8.3	6.7	3.9
December	87.5	511.9	599.3	164.8	764.2	28.2	7.7	8.6	7.1	8.2	6.7	3.8
1998												
January	88.2	504.1	592.4	164.0	756.4	28.4	7.6	8.5	7.0	8.1	6.8	3.8

(a) Estimates for July 1997 to December 1997 have been revised.

PERSONS AGED 15 TO 19—Education and Labour Force: **Original**—January 1998

	EMPLOYED.....			UNEMPLOYED.....							Participation rate
	Full time	Part time	Total	Looking for f/t work	Looking for p/t work	Total	Labour force	Not in labour force	Civilian population aged 15-19	Unemployment rate	
	'000	'000	'000	'000	'000	'000	'000	'000	'000	%	%
ATTENDING NEITHER SCHOOL NOR A TERTIARY EDUCATIONAL INSTITUTION FULL TIME											
Males	145.6	46.1	191.6	52.5	6.1	58.6	250.2	38.2	288.4	23.4	86.8
Females	76.8	68.2	145.0	45.4	7.6	53.0	198.1	43.8	241.8	26.8	81.9
Persons	222.4	114.3	336.7	98.0	13.7	111.6	448.3	82.0	530.2	24.9	84.5
ATTENDING A TERTIARY EDUCATIONAL INSTITUTION FULL TIME											
Males	7.3	33.2	40.5	* 3.5	8.3	11.8	52.4	25.9	78.3	22.6	66.9
Females	6.1	51.0	57.1	* 3.9	9.8	13.7	70.8	28.0	98.8	19.3	71.7
Persons	13.4	84.2	97.6	7.4	18.1	25.5	123.2	53.9	177.0	20.7	69.6
ATTENDING SCHOOL											
Males	7.7	74.1	81.9	* 3.2	21.6	24.7	106.6	192.5	299.1	23.2	35.6
Females	6.4	104.4	110.8	* 2.9	21.8	24.7	135.5	156.3	291.9	18.2	46.4
Persons	14.1	178.6	192.7	6.1	43.3	49.4	242.1	348.8	590.9	20.4	41.0
TOTAL											
Males	160.6	153.4	314.0	59.2	36.0	95.2	409.2	256.5	665.7	23.3	61.5
Females	89.3	223.7	313.0	52.3	39.1	91.4	404.4	228.1	632.5	22.6	63.9
Persons	249.9	377.1	627.0	111.5	75.1	186.6	813.6	484.6	1 298.2	22.9	62.7

LABOUR FORCE STATUS (AGED 15 & OVER)–States & Territories: Original–January 1998

	EMPLOYED.....			UNEMPLOYED.....			Labour force	Not in labour force	Civilian population aged 15 and over	Unemployment rate	Participation rate
	Full time	Part time	Total	Looking for f/t work	Looking for p/t work	Total					
	'000	'000	'000	'000	'000	'000					
MALES											
New South Wales	1 441.8	174.5	1 616.3	127.1	14.6	141.7	1 758.0	682.3	2 440.3	8.1	72.0
Victoria	1 054.8	130.9	1 185.7	102.0	20.4	122.4	1 308.1	484.2	1 792.2	9.4	73.0
Queensland	792.6	108.5	901.2	87.8	11.4	99.2	1 000.4	339.7	1 340.1	9.9	74.6
South Australia	325.1	43.3	368.4	40.9	5.2	46.1	414.5	169.8	584.3	11.1	70.9
Western Australia	444.2	53.8	498.0	36.9	5.1	42.0	539.9	166.2	706.1	7.8	76.5
Tasmania	97.3	15.3	112.6	14.4	1.8	16.3	128.9	52.9	181.7	12.6	70.9
Northern Territory	42.3	4.8	47.2	1.6	* 0.5	2.1	49.3	16.6	65.9	4.3	74.8
Australian Capital Territory	71.9	10.7	82.6	7.2	* 0.9	8.1	90.7	25.3	116.0	8.9	78.2
Australia	4 270.0	541.9	4 811.9	417.8	59.9	477.8	5 289.7	1 936.9	7 226.6	9.0	73.2
FEMALES											
New South Wales	721.4	464.1	1 185.5	71.4	31.2	102.6	1 288.1	1 241.2	2 529.3	8.0	50.9
Victoria	513.3	380.3	893.6	60.9	28.5	89.4	983.0	887.4	1 870.5	9.1	52.6
Queensland	386.6	283.9	670.5	46.6	19.4	66.0	736.5	628.2	1 364.7	9.0	54.0
South Australia	147.6	127.3	274.9	23.3	9.5	32.8	307.7	297.1	604.8	10.7	50.9
Western Australia	203.3	159.6	362.9	22.7	8.4	31.0	394.0	318.8	712.8	7.9	55.3
Tasmania	43.2	37.7	80.8	5.7	3.1	8.8	89.6	98.2	187.9	9.8	47.7
Northern Territory	25.5	12.1	37.6	1.6	* 0.8	2.4	40.0	24.6	64.6	6.0	61.9
Australian Capital Territory	45.0	23.6	68.6	4.0	2.2	6.1	74.7	45.1	119.8	8.2	62.4
Australia	2 085.9	1 488.5	3 574.4	236.0	103.1	339.1	3 913.6	3 540.8	7 454.3	8.7	52.5
PERSONS											
New South Wales	2 163.2	638.6	2 801.8	198.5	45.8	244.3	3 046.1	1 923.5	4 969.5	8.0	61.3
Victoria	1 568.1	511.3	2 079.3	162.8	48.9	211.8	2 291.1	1 371.6	3 662.7	9.2	62.6
Queensland	1 179.2	392.4	1 571.6	134.4	30.8	165.2	1 736.9	967.9	2 704.8	9.5	64.2
South Australia	472.7	170.6	643.3	64.2	14.7	78.9	722.1	466.9	1 189.1	10.9	60.7
Western Australia	647.5	213.4	860.9	59.5	13.4	73.0	933.9	485.0	1 418.9	7.8	65.8
Tasmania	140.5	52.9	193.4	20.2	4.9	25.1	218.5	151.1	369.6	11.5	59.1
Northern Territory	67.8	17.0	84.8	3.2	1.3	4.5	89.3	41.2	130.5	5.0	68.4
Australian Capital Territory	116.9	34.2	151.2	11.1	3.1	14.2	165.4	70.4	235.8	8.6	70.1
Australia	6 355.9	2 030.4	8 386.3	653.9	163.0	816.9	9 203.2	5 477.7	14 680.9	8.9	62.7

UNEMPLOYED PERSONS—New South Wales, Victoria and Queensland: Original

Month	NUMBER OF UNEMPLOYED PERSONS.....					UNEMPLOYMENT RATE.....					UNEMPLOYMENT TO POPULATION RATIO	
	Aged 15-19 looking for f/t work	Aged 20 and over looking for f/t work	Total looking for f/t work	Looking for p/t work	Total	Aged 15-19 looking for f/t work	Aged 20 and over looking for f/t work	Total looking for f/t work	Looking for p/t work	Total	Aged 15-19 looking for f/t work	Aged 20 and over looking for f/t work
	'000	'000	'000	'000	'000	%	%	%	%	%	%	%
NEW SOUTH WALES												
1996												
November	22.1	145.7	167.9	48.3	216.2	23.4	6.6	7.3	6.9	7.2	5.2	3.3
December	37.4	154.0	191.4	53.3	244.7	30.6	6.8	8.0	7.6	7.9	8.8	3.4
1997												
January	35.0	173.2	208.1	49.9	258.0	27.7	7.7	8.8	7.4	8.5	8.3	3.9
February	35.9	186.8	222.7	64.5	287.2	30.5	8.3	9.4	9.2	9.4	8.5	4.2
March	27.7	171.8	199.4	57.7	257.1	26.0	7.6	8.5	8.0	8.4	6.5	3.8
April	29.3	160.5	189.8	53.9	243.6	26.9	7.2	8.1	7.4	7.9	6.9	3.6
May	28.2	166.7	194.9	50.4	245.3	27.8	7.5	8.4	6.9	8.0	6.6	3.7
June	28.7	152.2	181.0	40.5	221.4	31.0	6.9	7.9	5.7	7.3	6.8	3.4
July	24.1	167.9	192.1	46.0	238.1	24.3	7.5	8.2	6.5	7.8	5.7	3.7
August	23.0	162.6	185.6	42.4	228.0	24.8	7.4	8.1	6.1	7.7	5.4	3.6
September	20.1	169.4	189.5	54.2	243.7	21.6	7.5	8.1	7.3	7.9	4.7	3.7
October	24.7	164.6	189.3	46.9	236.2	24.9	7.4	8.1	6.8	7.8	5.8	3.6
November	22.0	159.0	181.1	44.8	225.9	23.2	7.1	7.7	6.1	7.4	5.2	3.5
December	27.5	155.6	183.1	47.6	230.8	25.6	6.9	7.7	6.5	7.4	6.4	3.4
1998												
January	35.2	163.3	198.5	45.8	244.3	29.0	7.3	8.4	6.7	8.0	8.2	3.6
VICTORIA												
1996												
November	20.4	146.6	167.0	37.2	204.2	31.3	8.8	9.6	6.4	8.8	6.5	4.4
December	25.8	141.2	167.0	48.4	215.4	34.4	8.4	9.6	8.2	9.2	8.2	4.3
1997												
January	21.9	150.6	172.5	40.7	213.2	29.4	9.1	9.9	7.4	9.3	7.0	4.6
February	19.9	165.3	185.2	48.9	234.1	30.4	9.8	10.6	8.5	10.1	6.3	5.0
March	19.8	148.3	168.1	52.5	220.6	33.0	9.0	9.9	8.7	9.6	6.3	4.5
April	16.7	143.4	160.2	49.7	209.9	28.9	8.7	9.4	8.3	9.1	5.3	4.3
May	17.3	146.5	163.8	44.7	208.4	31.1	8.9	9.6	7.6	9.1	5.5	4.4
June	15.3	149.4	164.6	42.9	207.5	27.1	9.0	9.6	7.1	9.0	4.8	4.5
July	15.1	139.5	154.6	39.7	194.3	24.0	8.4	9.0	6.8	8.5	4.8	4.2
August	16.3	141.6	157.9	44.2	202.1	29.8	8.7	9.4	7.6	8.9	5.2	4.3
September	14.7	145.2	159.9	51.7	211.6	24.5	8.8	9.3	8.4	9.1	4.6	4.4
October	16.7	124.7	141.4	42.5	183.9	26.1	7.6	8.3	7.1	8.0	5.3	3.7
November	18.0	124.7	142.7	41.8	184.5	33.2	7.6	8.4	6.9	8.0	5.7	3.7
December	26.4	115.9	142.3	49.3	191.7	34.8	7.0	8.2	8.1	8.2	8.3	3.5
1998												
January	26.2	136.6	162.8	48.9	211.8	35.9	8.2	9.4	8.7	9.2	8.3	4.1
QUEENSLAND												
1996												
November	22.4	94.0	116.4	29.0	145.4	32.9	7.8	9.1	6.9	8.6	9.1	3.9
December	26.8	96.3	123.0	37.7	160.7	33.0	7.9	9.4	9.0	9.3	10.9	4.0
1997												
January	27.4	121.2	148.6	37.8	186.4	35.5	10.0	11.5	9.3	11.0	11.1	5.0
February	23.5	128.1	151.5	32.9	184.5	32.5	10.4	11.6	7.8	10.7	9.5	5.3
March	21.1	123.1	144.2	37.6	181.8	34.1	10.1	11.3	8.5	10.6	8.6	5.1
April	16.1	120.7	136.8	31.1	167.9	27.0	10.0	10.8	7.0	9.8	6.5	5.0
May	16.7	115.3	132.0	34.9	166.9	29.6	9.5	10.4	8.0	9.8	6.7	4.8
June	15.8	102.5	118.3	31.2	149.5	28.1	8.5	9.4	6.7	8.7	6.4	4.2
July	18.7	104.8	123.5	26.5	150.0	28.6	8.5	9.5	6.1	8.7	7.6	4.3
August	16.9	114.6	131.5	29.3	160.8	29.9	9.3	10.2	6.8	9.4	6.8	4.7
September	18.2	102.3	120.5	37.0	157.4	29.6	8.4	9.4	8.0	9.0	7.3	4.2
October	16.1	99.6	115.7	34.9	150.6	27.0	8.1	9.0	7.5	8.6	6.5	4.1
November	18.3	103.9	122.2	33.6	155.9	31.8	8.4	9.5	7.4	8.9	7.3	4.2
December	23.1	102.0	125.0	31.3	156.3	32.4	8.1	9.4	7.1	8.9	9.2	4.2
1998												
January	22.6	111.8	134.4	30.8	165.2	30.5	9.0	10.2	7.3	9.5	9.0	4.6

Month	NUMBER OF UNEMPLOYED PERSONS.....					UNEMPLOYMENT RATE.....					UNEMPLOYMENT TO POPULATION RATIO	
	Aged 15-19 looking for f/t work	Aged 20 and over looking for f/t work	Total looking for f/t work	Looking for p/t work	Total	Aged 15-19 looking for f/t work	Aged 20 and over looking for f/t work	Total looking for f/t work	Looking for p/t work	Total	Aged 15-19 looking for f/t work	Aged 20 and over looking for f/t work
	'000	'000	'000	'000	'000	%	%	%	%	%	%	%
SOUTH AUSTRALIA												
1996												
November	7.0	47.8	54.8	11.6	66.3	31.6	9.5	10.4	5.8	9.2	7.2	4.4
December	10.9	47.1	58.0	12.6	70.6	39.6	9.2	10.8	6.4	9.6	11.1	4.4
1997												
January	8.2	51.4	59.6	14.1	73.6	32.5	10.1	11.2	7.3	10.2	8.4	4.7
February	8.6	51.3	59.9	14.4	74.4	34.7	10.1	11.2	7.2	10.1	8.8	4.7
March	7.6	48.3	55.9	15.2	71.1	34.0	9.7	10.7	7.0	9.6	7.7	4.5
April	10.6	46.8	57.4	13.8	71.1	42.1	9.4	10.9	6.7	9.7	10.8	4.3
May	8.4	49.0	57.4	12.4	69.8	37.1	9.8	10.9	6.1	9.6	8.6	4.5
June	7.6	47.6	55.2	13.0	68.2	36.2	9.3	10.4	6.4	9.3	7.7	4.4
July	7.7	48.0	55.7	12.3	68.0	34.9	9.4	10.5	6.2	9.3	7.8	4.4
August	6.5	48.7	55.2	12.4	67.6	28.7	9.8	10.6	6.1	9.3	6.6	4.5
September	7.2	51.2	58.4	13.8	72.2	31.9	10.1	11.1	6.6	9.8	7.3	4.7
October	7.4	49.8	57.1	12.7	69.8	32.3	9.9	10.9	6.2	9.5	7.5	4.6
November	6.5	50.8	57.4	11.9	69.3	28.8	10.0	10.8	5.8	9.5	6.6	4.7
December	8.9	49.7	58.5	12.5	71.0	35.0	9.6	10.8	6.4	9.7	9.0	4.6
1998												
January	9.2	55.0	64.2	14.7	78.9	32.5	10.8	12.0	7.9	10.9	9.3	5.0
WESTERN AUSTRALIA												
1996												
November	9.8	42.7	52.5	13.8	66.3	25.0	6.7	7.8	5.9	7.3	7.6	3.4
December	12.0	43.7	55.7	15.0	70.8	26.5	6.8	8.1	6.3	7.6	9.3	3.5
1997												
January	10.2	50.3	60.4	15.7	76.1	22.0	7.8	8.8	6.7	8.3	7.8	4.0
February	9.6	48.6	58.2	20.8	79.1	23.3	7.5	8.5	8.5	8.5	7.4	3.9
March	9.3	45.6	54.9	18.5	73.4	24.0	7.2	8.2	7.4	8.0	7.2	3.6
April	7.5	44.4	51.9	14.8	66.8	18.7	7.0	7.7	6.1	7.3	5.8	3.5
May	6.7	39.8	46.5	16.7	63.2	17.3	6.2	6.9	7.1	6.9	5.2	3.1
June	6.9	42.4	49.3	14.9	64.2	17.7	6.7	7.3	6.1	7.0	5.3	3.3
July	4.9	43.4	48.3	13.3	61.6	12.9	6.7	7.0	5.8	6.7	3.7	3.4
August	6.4	43.1	49.5	14.8	64.3	16.9	6.7	7.3	6.1	7.0	4.9	3.4
September	8.6	42.9	51.5	13.7	65.2	21.5	6.5	7.4	5.7	6.9	6.6	3.4
October	5.9	36.9	42.8	12.6	55.4	15.3	5.8	6.3	5.2	6.0	4.5	2.9
November	8.4	39.2	47.6	13.7	61.4	21.5	6.1	6.9	5.7	6.6	6.4	3.1
December	10.9	43.3	54.1	14.1	68.2	26.0	6.5	7.7	5.8	7.2	8.2	3.4
1998												
January	11.7	47.9	59.5	13.4	73.0	26.2	7.2	8.4	5.9	7.8	8.8	3.7
TASMANIA												
1996												
November	2.5	16.3	18.7	3.4	22.2	26.4	10.8	11.7	5.7	10.1	7.3	4.9
December	3.8	16.2	20.1	5.1	25.1	35.0	10.6	12.2	8.5	11.2	11.1	4.8
1997												
January	4.0	16.5	20.5	4.4	24.9	35.1	11.1	12.8	7.3	11.3	11.7	4.9
February	3.7	17.9	21.6	4.0	25.6	32.8	11.6	13.1	7.1	11.6	10.9	5.3
March	3.8	15.1	18.9	4.6	23.5	35.1	10.3	12.0	7.4	10.7	11.0	4.5
April	3.5	15.9	19.4	3.4	22.8	34.4	10.7	12.3	5.7	10.5	10.2	4.7
May	3.1	14.2	17.3	4.2	21.5	34.3	9.6	11.0	6.9	9.9	9.1	4.2
June	3.3	15.8	19.1	3.6	22.8	37.7	10.9	12.4	6.3	10.7	9.7	4.7
July	3.4	15.4	18.9	4.5	23.4	38.6	10.7	12.3	7.3	10.9	9.9	4.6
August	4.0	15.6	19.6	4.0	23.6	43.3	10.8	12.8	6.5	11.0	11.7	4.6
September	4.0	16.4	20.4	4.2	24.6	42.4	11.1	13.0	7.0	11.4	11.7	4.9
October	3.3	17.1	20.4	4.3	24.7	36.0	11.4	12.8	7.4	11.4	9.5	5.1
November	2.9	16.3	19.2	4.6	23.8	32.1	11.0	12.2	7.6	10.9	8.3	4.9
December	3.0	18.7	21.7	6.1	27.9	30.5	12.3	13.4	10.0	12.5	8.8	5.6
1998												
January	3.7	16.5	20.2	4.9	25.1	34.7	11.0	12.6	8.5	11.5	10.7	4.9

UNEMPLOYED PERSONS—Northern Territory and Australian Capital Territory: Original

Month	NUMBER OF UNEMPLOYED PERSONS.....					UNEMPLOYMENT RATE.....					UNEMPLOYMENT TO POPULATION RATIO	
	Aged 15-19 looking for f/t work	Aged 20 and over looking for f/t work	Total looking for f/t work	Looking for p/t work	Total	Aged 15-19 looking for f/t work	Aged 20 and over looking for f/t work	Total looking for f/t work	Looking for p/t work	Total	Aged 15-19 looking for f/t work	Aged 20 and over looking for f/t work
	'000	'000	'000	'000	'000	%	%	%	%	%	%	%
NORTHERN TERRITORY												
1996												
November	* 0.5	2.8	3.3	* 0.7	4.0	* 16.1	4.5	5.0	* 3.2	4.6	* 3.8	2.4
December	* 0.5	2.7	3.2	* 1.1	4.3	* 14.3	4.2	4.7	* 5.8	5.0	* 3.6	2.4
1997												
January	* 0.9	4.2	5.1	* 1.1	6.2	* 23.7	6.8	7.7	* 6.3	7.4	* 6.7	3.7
February	* 0.7	4.1	4.9	* 1.0	5.9	* 24.8	6.5	7.3	* 4.8	6.7	* 5.6	3.6
March	* 0.8	2.6	3.4	1.6	5.0	* 25.4	4.0	5.0	7.8	5.6	* 5.8	2.3
April	* 0.7	3.6	4.3	* 1.2	5.5	* 26.2	5.6	6.4	* 5.8	6.2	* 5.5	3.1
May	* 0.8	3.6	4.4	* 0.7	5.1	* 25.9	5.4	6.4	* 3.3	5.6	* 6.4	3.1
June	* 0.6	3.6	4.2	* 0.6	4.8	* 23.4	5.4	6.0	* 2.8	5.3	* 4.5	3.1
July	* 0.6	3.0	3.6	* 0.9	4.4	* 18.6	4.5	5.1	* 3.9	4.8	* 4.7	2.5
August	* 0.4	3.3	3.7	* 1.0	4.8	* 16.2	5.4	5.8	* 4.3	5.4	* 3.3	2.9
September	* 0.4	3.4	3.8	* 0.9	4.7	* 14.3	4.9	5.3	* 5.0	5.3	* 3.4	2.9
October	* 0.4	1.5	1.8	* 0.9	2.7	* 11.9	2.1	2.5	* 4.7	3.0	* 2.9	1.3
November	* 0.1	3.2	3.2	* 0.3	3.5	* 2.9	4.4	4.3	* 1.6	3.8	* 0.6	2.7
December	* 0.3	2.8	3.1	* 1.1	4.3	* 8.9	3.9	4.2	* 6.3	4.6	* 2.6	2.4
1998												
January	* 0.6	2.6	3.2	1.3	4.5	* 12.3	3.9	4.5	7.2	5.0	* 4.2	2.2
AUSTRALIAN CAPITAL TERRITORY												
1996												
November	1.5	7.6	9.2	3.5	12.7	38.4	6.4	7.4	8.6	7.7	6.7	3.6
December	1.8	8.1	9.9	4.2	14.1	37.2	6.7	7.9	10.0	8.4	7.8	3.8
1997												
January	1.8	9.5	11.3	3.9	15.2	38.3	7.7	8.8	10.3	9.2	7.7	4.5
February	1.3	9.1	10.4	5.0	15.4	35.8	7.4	8.2	11.6	9.0	5.7	4.3
March	1.6	6.7	8.3	4.6	12.9	43.6	5.5	6.6	10.7	7.6	7.3	3.2
April	1.0	6.7	7.7	4.3	11.9	31.0	5.4	6.1	9.7	7.0	4.5	3.1
May	* 0.9	6.6	7.5	4.2	11.7	* 26.3	5.3	5.8	9.5	6.8	* 3.8	3.1
June	1.3	7.0	8.3	4.0	12.3	42.5	5.6	6.5	9.4	7.2	5.9	3.3
July	* 0.8	7.3	8.1	3.0	11.1	* 25.1	5.8	6.3	7.3	6.6	* 3.7	3.4
August	1.3	8.0	9.3	4.1	13.4	43.0	6.5	7.3	9.7	7.9	5.9	3.8
September	1.2	7.7	8.8	4.7	13.6	36.7	6.0	6.8	11.3	7.9	5.3	3.6
October	1.2	8.5	9.7	3.4	13.1	32.2	6.8	7.5	8.4	7.7	5.3	4.0
November	1.5	7.5	9.1	3.5	12.5	37.3	6.0	7.0	8.9	7.4	7.0	3.5
December	1.9	8.1	10.0	3.5	13.5	43.3	6.5	7.7	8.8	8.0	8.5	3.8
1998												
January	2.4	8.7	11.1	3.1	14.2	51.7	7.1	8.7	8.3	8.6	10.7	4.1

LABOUR FORCE STATUS (AGED 15 AND OVER)–New South Wales(a)

SEASONALLY ADJUSTED.....

TREND.....

Month	SEASONALLY ADJUSTED.....					TREND.....					Civilian population aged 15 and over '000
	Employed full time '000	Total employed '000	Total unemployed '000	Unemp-loyment rate %	Partic-ipation rate %	Employed full time '000	Total employed '000	Total unemployed '000	Unemp-loyment rate %	Partic-ipation rate %	
MALES											
1996											
November	1 424.2	1 593.0	141.3	8.1	72.1	1 427.2	1 602.3	141.0	8.1	72.5	2 404.6
December	1 432.4	1 610.1	136.2	7.8	72.5	1 429.6	1 604.3	140.8	8.1	72.5	2 407.3
1997											
January	1 438.9	1 618.0	137.3	7.8	72.9	1 430.4	1 605.4	141.3	8.1	72.5	2 409.2
February	1 415.1	1 589.7	151.1	8.7	72.2	1 429.5	1 605.9	142.3	8.1	72.5	2 411.1
March	1 438.9	1 607.1	142.0	8.1	72.5	1 426.7	1 605.2	143.4	8.2	72.5	2 413.0
April	1 424.0	1 610.0	143.7	8.2	72.6	1 422.5	1 603.1	143.8	8.2	72.3	2 415.6
May	1 409.7	1 596.7	147.3	8.4	72.1	1 418.0	1 599.6	143.9	8.3	72.1	2 418.1
June	1 422.2	1 601.8	131.9	7.6	71.6	1 415.0	1 595.9	144.0	8.3	71.9	2 420.7
July	1 411.6	1 595.9	155.1	8.9	72.2	1 414.6	1 593.4	144.5	8.3	71.7	2 423.6
August	1 404.6	1 576.2	140.4	8.2	70.7	1 417.2	1 593.5	144.8	8.3	71.6	2 426.5
September	1 428.6	1 603.9	143.7	8.2	71.9	1 422.4	1 597.0	144.2	8.3	71.7	2 429.3
October	1 429.2	1 593.2	146.2	8.4	71.5	1 428.5	1 603.5	142.2	8.1	71.8	2 432.3
November	1 439.2	1 619.4	145.5	8.2	72.5	1 434.1	1 611.1	139.3	8.0	71.9	2 435.2
December	1 437.5	1 621.8	129.6	7.4	71.8	1 438.9	1 618.4	136.1	7.8	72.0	2 438.1
1998											
January	1 442.8	1 628.5	128.0	7.3	72.0	1 443.3	1 625.4	132.0	7.5	72.0	2 440.3
FEMALES											
1996											
November	730.5	1 206.2	87.1	6.7	51.9	730.3	1 207.8	98.4	7.5	52.4	2 492.6
December	731.9	1 210.7	102.1	7.8	52.6	729.8	1 210.4	99.4	7.6	52.5	2 495.8
1997											
January	730.1	1 213.8	101.3	7.7	52.6	729.0	1 212.0	100.8	7.7	52.6	2 498.1
February	726.1	1 212.3	107.7	8.2	52.8	727.8	1 211.8	102.4	7.8	52.6	2 500.3
March	720.3	1 206.3	98.9	7.6	52.2	726.1	1 209.6	103.6	7.9	52.5	2 502.5
April	731.7	1 216.2	104.5	7.9	52.7	724.3	1 206.4	103.8	7.9	52.3	2 505.3
May	726.0	1 202.3	107.0	8.2	52.2	722.6	1 203.0	103.0	7.9	52.1	2 508.0
June	710.2	1 186.3	97.8	7.6	51.1	721.1	1 199.9	101.7	7.8	51.8	2 510.7
July	727.0	1 208.3	100.6	7.7	52.1	720.0	1 198.4	100.4	7.7	51.7	2 513.6
August	716.6	1 191.6	100.8	7.8	51.4	719.4	1 199.3	99.0	7.6	51.6	2 516.5
September	720.5	1 213.5	95.6	7.3	52.0	719.2	1 202.4	97.7	7.5	51.6	2 519.4
October	716.3	1 188.6	99.5	7.7	51.1	719.5	1 206.7	96.8	7.4	51.7	2 522.1
November	724.7	1 219.6	93.0	7.1	52.0	719.9	1 211.0	96.1	7.4	51.8	2 524.7
December	716.3	1 220.6	95.0	7.2	52.1	720.2	1 215.1	95.8	7.3	51.9	2 527.4
1998											
January	722.1	1 217.0	97.8	7.4	52.0	719.8	1 217.7	95.4	7.3	51.9	2 529.3
PERSONS											
1996											
November	2 154.7	2 799.3	228.4	7.5	61.8	2 157.5	2 810.2	239.4	7.9	62.3	4 897.2
December	2 164.2	2 820.8	238.3	7.8	62.4	2 159.4	2 814.6	240.2	7.9	62.3	4 903.1
1997											
January	2 169.0	2 831.7	238.5	7.8	62.6	2 159.4	2 817.3	242.1	7.9	62.3	4 907.3
February	2 141.3	2 801.9	258.8	8.5	62.3	2 157.4	2 817.7	244.7	8.0	62.4	4 911.4
March	2 159.2	2 813.4	240.8	7.9	62.1	2 152.9	2 814.7	246.9	8.1	62.3	4 915.5
April	2 155.7	2 826.2	248.2	8.1	62.5	2 146.8	2 809.5	247.6	8.1	62.1	4 920.8
May	2 135.6	2 799.0	254.3	8.3	62.0	2 140.6	2 802.6	246.9	8.1	61.9	4 926.1
June	2 132.4	2 788.1	229.7	7.6	61.2	2 136.1	2 795.8	245.8	8.1	61.7	4 931.4
July	2 138.7	2 804.2	255.7	8.4	62.0	2 134.7	2 791.8	244.9	8.1	61.5	4 937.2
August	2 121.2	2 767.9	241.2	8.0	60.9	2 136.6	2 792.8	243.9	8.0	61.4	4 942.9
September	2 149.2	2 817.4	239.3	7.8	61.8	2 141.6	2 799.4	242.0	8.0	61.5	4 948.7
October	2 145.5	2 781.8	245.6	8.1	61.1	2 148.0	2 810.2	239.0	7.8	61.5	4 954.3
November	2 163.8	2 839.0	238.5	7.7	62.0	2 154.0	2 822.1	235.5	7.7	61.6	4 959.9
December	2 153.8	2 842.3	224.6	7.3	61.8	2 159.1	2 833.5	231.9	7.6	61.7	4 965.6
1998											
January	2 164.9	2 845.5	225.8	7.4	61.8	2 163.2	2 843.1	227.4	7.4	61.8	4 969.5

(a) Trend estimates for July 1997 to December 1997 have been revised.

LABOUR FORCE STATUS (AGED 15 AND OVER)-Victoria(a)

SEASONALLY ADJUSTED.....

TREND.....

Month	SEASONALLY ADJUSTED.....					TREND.....					Civilian population aged 15 and over '000
	Employed full time '000	Total employed '000	Total unemployed '000	Unemp- loyment rate %	Partic- ipation rate %	Employed full time '000	Total employed '000	Total unemployed '000	Unemp- loyment rate %	Partic- ipation rate %	
MALES											
1996											
November	1 049.1	1 194.8	118.5	9.0	74.3	1 046.3	1 188.2	120.2	9.2	74.0	1 767.2
December	1 043.0	1 185.0	120.2	9.2	73.8	1 047.2	1 188.7	120.3	9.2	74.0	1 768.8
1997											
January	1 056.7	1 193.5	117.5	9.0	74.1	1 047.8	1 188.4	120.0	9.2	73.9	1 770.2
February	1 046.8	1 182.8	120.1	9.2	73.5	1 047.5	1 187.7	119.9	9.2	73.8	1 771.5
March	1 040.9	1 186.5	122.3	9.3	73.8	1 046.0	1 186.5	120.1	9.2	73.7	1 772.9
April	1 045.7	1 187.3	120.7	9.2	73.7	1 043.4	1 184.8	120.6	9.2	73.6	1 774.8
May	1 044.0	1 183.5	115.7	8.9	73.1	1 040.5	1 183.1	120.9	9.3	73.4	1 776.7
June	1 033.5	1 182.0	126.0	9.6	73.5	1 037.8	1 181.8	120.6	9.3	73.2	1 778.6
July	1 040.5	1 184.1	117.3	9.0	73.1	1 036.0	1 181.9	119.2	9.2	73.1	1 780.6
August	1 033.0	1 174.7	117.9	9.1	72.5	1 036.0	1 183.7	116.9	9.0	73.0	1 782.5
September	1 031.8	1 185.5	121.0	9.3	73.2	1 037.8	1 187.0	114.4	8.8	72.9	1 784.5
October	1 041.9	1 195.7	104.9	8.1	72.8	1 041.4	1 191.1	112.2	8.6	73.0	1 786.5
November	1 048.9	1 196.2	106.8	8.2	72.9	1 045.8	1 194.8	110.6	8.5	73.0	1 788.4
December	1 048.1	1 203.2	110.2	8.4	73.4	1 050.3	1 197.8	109.7	8.4	73.0	1 790.4
1998											
January	1 060.6	1 194.4	115.1	8.8	73.1	1 054.2	1 200.1	109.8	8.4	73.1	1 792.2
FEMALES											
1996											
November	516.4	912.3	93.3	9.3	54.5	513.9	908.7	91.7	9.2	54.2	1 844.9
December	511.7	910.4	89.8	9.0	54.2	513.4	912.1	90.2	9.0	54.3	1 846.8
1997											
January	516.2	921.4	86.4	8.6	54.5	512.1	913.6	89.2	8.9	54.3	1 848.3
February	512.4	916.8	88.0	8.8	54.3	510.8	913.6	88.9	8.9	54.2	1 849.7
March	502.9	901.3	88.9	9.0	53.5	509.7	912.4	89.5	8.9	54.1	1 851.1
April	510.3	915.5	90.8	9.0	54.3	509.2	910.5	90.5	9.0	54.0	1 853.1
May	505.4	902.2	94.5	9.5	53.7	509.4	908.7	91.6	9.2	53.9	1 855.1
June	517.2	917.9	92.0	9.1	54.4	509.7	907.5	92.3	9.2	53.8	1 857.1
July	512.7	908.1	88.3	8.9	53.6	509.9	907.2	92.0	9.2	53.7	1 859.0
August	502.9	895.4	95.5	9.6	53.3	510.1	908.4	90.7	9.1	53.7	1 861.0
September	512.8	917.9	87.3	8.7	54.0	510.5	910.9	88.9	8.9	53.7	1 862.9
October	512.0	908.6	89.1	8.9	53.5	511.5	914.6	86.9	8.7	53.7	1 864.8
November	506.6	921.5	84.5	8.4	53.9	513.1	918.8	85.2	8.5	53.8	1 866.8
December	521.8	927.1	77.1	7.7	53.7	514.9	922.8	83.8	8.3	53.9	1 868.7
1998											
January	517.7	927.0	87.7	8.6	54.3	517.0	927.0	82.8	8.2	54.0	1 870.5
PERSONS											
1996											
November	1 565.5	2 107.1	211.8	9.1	64.2	1 560.2	2 096.9	211.9	9.2	63.9	3 612.0
December	1 554.8	2 095.4	210.0	9.1	63.8	1 560.5	2 100.8	210.5	9.1	63.9	3 615.7
1997											
January	1 572.9	2 114.8	203.9	8.8	64.1	1 559.9	2 102.0	209.2	9.1	63.9	3 618.4
February	1 559.2	2 099.6	208.1	9.0	63.7	1 558.3	2 101.3	208.9	9.0	63.8	3 621.2
March	1 543.7	2 087.8	211.2	9.2	63.4	1 555.7	2 098.9	209.6	9.1	63.7	3 624.0
April	1 556.0	2 102.8	211.5	9.1	63.8	1 552.6	2 095.3	211.1	9.2	63.6	3 627.9
May	1 549.4	2 085.8	210.2	9.2	63.2	1 549.9	2 091.8	212.5	9.2	63.4	3 631.8
June	1 550.7	2 099.9	217.9	9.4	63.7	1 547.5	2 089.3	212.8	9.2	63.3	3 635.7
July	1 553.2	2 092.3	205.6	8.9	63.1	1 545.9	2 089.0	211.1	9.2	63.2	3 639.6
August	1 535.9	2 070.2	213.4	9.3	62.7	1 546.1	2 092.1	207.6	9.0	63.1	3 643.5
September	1 544.5	2 103.4	208.2	9.0	63.4	1 548.3	2 097.9	203.3	8.8	63.1	3 647.4
October	1 554.0	2 104.3	194.0	8.4	62.9	1 552.9	2 105.6	199.1	8.6	63.1	3 651.3
November	1 555.4	2 117.7	191.3	8.3	63.2	1 558.9	2 113.6	195.8	8.5	63.2	3 655.2
December	1 570.0	2 130.4	187.3	8.1	63.3	1 565.2	2 120.6	193.5	8.4	63.2	3 659.2
1998											
January	1 578.3	2 121.5	202.8	8.7	63.5	1 571.2	2 127.1	192.7	8.3	63.3	3 662.7

(a) Trend estimates for July 1997 to December 1997 have been revised.

LABOUR FORCE STATUS (AGED 15 AND OVER)–Queensland(a)

SEASONALLY ADJUSTED.....

TREND.....

Month	SEASONALLY ADJUSTED.....					TREND.....					Civilian population aged 15 and over '000
	Employed full time '000	Total employed '000	Total unemployed '000	Unemp- loyment rate %	Partic- ipation rate %	Employed full time '000	Total employed '000	Total unemployed '000	Unemp- loyment rate %	Partic- ipation rate %	
MALES											
1996											
November	783.2	886.8	86.5	8.9	74.4	781.6	881.2	93.9	9.6	74.6	1 307.7
December	783.4	882.0	93.6	9.6	74.5	779.7	880.2	94.9	9.7	74.4	1 310.2
1997											
January	774.5	882.4	97.3	9.9	74.6	776.2	878.3	96.3	9.9	74.2	1 312.6
February	777.9	874.2	97.4	10.0	73.9	772.5	876.4	97.2	10.0	74.0	1 315.0
March	762.2	867.9	104.0	10.7	73.8	769.8	875.5	97.4	10.0	73.9	1 317.4
April	766.4	876.3	96.3	9.9	73.7	768.9	876.2	96.8	9.9	73.7	1 319.7
May	771.9	879.7	93.7	9.6	73.6	769.9	878.6	95.6	9.8	73.7	1 321.9
June	766.3	883.8	88.5	9.1	73.4	772.5	882.1	94.6	9.7	73.8	1 324.1
July	787.5	889.0	94.8	9.6	74.2	775.3	885.4	94.4	9.6	73.9	1 326.2
August	775.5	887.6	100.4	10.2	74.4	777.8	888.4	94.8	9.6	74.0	1 328.2
September	776.2	885.9	94.3	9.6	73.7	779.8	891.3	95.3	9.7	74.2	1 330.3
October	784.7	900.8	93.1	9.4	74.6	781.8	894.6	95.1	9.6	74.3	1 332.8
November	780.7	893.2	96.3	9.7	74.1	784.2	898.5	94.4	9.5	74.3	1 335.4
December	784.5	900.5	94.8	9.5	74.4	786.8	902.4	93.4	9.4	74.4	1 338.0
1998											
January	796.2	913.9	88.5	8.8	74.8	788.7	906.1	92.0	9.2	74.5	1 340.1
FEMALES											
1996											
November	378.0	657.4	67.7	9.3	54.5	380.1	661.3	69.6	9.5	54.9	1 331.4
December	382.4	662.1	70.0	9.6	54.9	378.8	662.5	70.1	9.6	54.9	1 334.1
1997											
January	370.4	659.4	75.4	10.3	55.0	377.1	664.4	70.1	9.5	55.0	1 336.7
February	377.9	675.5	69.0	9.3	55.6	375.4	667.0	69.5	9.4	55.0	1 339.3
March	375.5	669.5	64.3	8.8	54.7	374.2	669.7	68.5	9.3	55.0	1 341.9
April	375.6	671.5	66.4	9.0	54.9	373.8	672.2	67.4	9.1	55.0	1 344.1
May	374.7	669.4	71.9	9.7	55.1	374.2	674.5	66.7	9.0	55.0	1 346.4
June	365.1	679.7	64.7	8.7	55.2	375.3	677.1	66.6	9.0	55.1	1 348.6
July	381.6	683.3	62.5	8.4	55.2	377.3	680.1	67.1	9.0	55.3	1 350.8
August	386.2	679.0	70.4	9.4	55.4	380.0	683.2	67.8	9.0	55.5	1 352.9
September	380.5	684.1	68.7	9.1	55.6	383.1	685.8	68.0	9.0	55.6	1 355.1
October	381.5	693.4	69.2	9.1	56.2	385.6	687.5	67.9	9.0	55.6	1 357.6
November	387.8	691.0	68.8	9.1	55.9	387.5	688.5	67.5	8.9	55.6	1 360.1
December	398.9	684.9	64.7	8.6	55.0	389.0	689.0	66.8	8.8	55.5	1 362.7
1998											
January	382.1	687.9	64.3	8.5	55.1	389.1	689.1	66.0	8.7	55.3	1 364.7
PERSONS											
1996											
November	1 161.2	1 544.2	154.3	9.1	64.4	1 161.7	1 542.4	163.5	9.6	64.6	2 639.1
December	1 165.8	1 544.2	163.6	9.6	64.6	1 158.4	1 542.7	165.0	9.7	64.6	2 644.3
1997											
January	1 144.9	1 541.8	172.7	10.1	64.7	1 153.3	1 542.7	166.3	9.7	64.5	2 649.3
February	1 155.8	1 549.7	166.4	9.7	64.7	1 148.0	1 543.3	166.7	9.7	64.4	2 654.3
March	1 137.7	1 537.4	168.3	9.9	64.1	1 144.0	1 545.2	165.9	9.7	64.3	2 659.3
April	1 142.0	1 547.8	162.8	9.5	64.2	1 142.7	1 548.4	164.1	9.6	64.3	2 663.8
May	1 146.5	1 549.1	165.5	9.7	64.3	1 144.2	1 553.1	162.3	9.5	64.3	2 668.3
June	1 131.4	1 563.5	153.2	8.9	64.2	1 147.7	1 559.1	161.2	9.4	64.4	2 672.8
July	1 169.1	1 572.3	157.3	9.1	64.6	1 152.6	1 565.5	161.5	9.4	64.5	2 676.9
August	1 161.7	1 566.5	170.8	9.8	64.8	1 157.8	1 571.7	162.6	9.4	64.7	2 681.1
September	1 156.7	1 570.0	163.0	9.4	64.5	1 162.9	1 577.1	163.3	9.4	64.8	2 685.3
October	1 166.1	1 594.2	162.3	9.2	65.3	1 167.4	1 582.1	163.0	9.3	64.9	2 690.4
November	1 168.5	1 584.3	165.1	9.4	64.9	1 171.7	1 587.0	161.8	9.3	64.9	2 695.5
December	1 183.4	1 585.4	159.6	9.1	64.6	1 175.8	1 591.4	160.2	9.1	64.9	2 700.6
1998											
January	1 178.3	1 601.8	152.8	8.7	64.9	1 177.8	1 595.2	158.0	9.0	64.8	2 704.8

(a) Trend estimates for July 1997 to December 1997 have been revised.

LABOUR FORCE STATUS (AGED 15 AND OVER)–South Australia(a)

SEASONALLY ADJUSTED.....

TREND.....

Month	SEASONALLY ADJUSTED.....					TREND.....					Civilian population aged 15 and over '000
	Employed full time '000	Total employed '000	Total unemployed '000	Unemp- loyment rate %	Partic- ipation rate %	Employed full time '000	Total employed '000	Total unemployed '000	Unemp- loyment rate %	Partic- ipation rate %	
MALES											
1996											
November	320.8	368.1	42.8	10.4	70.9	320.1	367.7	41.7	10.2	70.6	579.5
December	321.6	368.8	41.4	10.1	70.7	320.7	368.0	41.6	10.1	70.6	579.8
1997											
January	323.1	368.0	40.7	10.0	70.5	321.1	368.7	41.6	10.1	70.7	580.0
February	320.5	369.0	41.4	10.1	70.7	321.2	369.3	42.0	10.2	70.9	580.3
March	320.2	372.4	42.0	10.1	71.4	321.1	370.0	42.6	10.3	71.1	580.5
April	322.1	368.7	44.5	10.8	71.1	321.4	370.8	43.1	10.4	71.3	580.8
May	318.8	370.1	45.1	10.9	71.4	322.2	372.0	43.4	10.5	71.5	581.1
June	324.6	375.5	42.3	10.1	71.9	323.3	373.2	43.5	10.4	71.7	581.5
July	325.6	373.3	43.2	10.4	71.6	324.2	374.2	43.5	10.4	71.8	581.9
August	325.9	375.7	42.5	10.2	71.8	324.6	374.7	43.5	10.4	71.8	582.3
September	325.3	375.7	44.1	10.5	72.0	324.6	374.6	43.4	10.4	71.7	582.7
October	321.9	374.1	43.7	10.5	71.6	324.4	373.9	43.4	10.4	71.6	583.1
November	323.9	372.6	44.0	10.6	71.4	324.3	373.0	43.3	10.4	71.3	583.6
December	323.8	371.7	42.9	10.4	71.0	324.4	372.0	43.1	10.4	71.1	584.0
1998											
January	326.9	370.3	41.8	10.1	70.5	324.6	371.3	42.8	10.3	70.9	584.3
FEMALES											
1996											
November	148.2	288.6	26.5	8.4	52.5	150.2	291.0	27.5	8.6	53.1	600.2
December	150.5	289.0	28.4	8.9	52.9	150.1	291.4	27.3	8.6	53.1	600.5
1997											
January	150.6	291.7	26.6	8.4	53.0	150.1	292.0	27.1	8.5	53.1	600.7
February	150.1	293.7	27.0	8.4	53.4	150.3	292.4	27.1	8.5	53.2	601.0
March	150.1	295.1	28.0	8.7	53.7	150.7	292.4	27.1	8.5	53.2	601.2
April	150.6	292.1	26.6	8.3	53.0	150.8	291.7	27.3	8.6	53.0	601.5
May	149.9	288.3	26.2	8.3	52.3	150.5	290.5	27.6	8.7	52.8	601.8
June	152.6	289.8	29.1	9.1	53.0	149.5	289.1	27.8	8.8	52.6	602.2
July	149.3	287.9	28.9	9.1	52.6	148.2	288.4	27.9	8.8	52.5	602.6
August	145.0	286.2	27.4	8.7	52.0	146.9	288.2	27.9	8.8	52.4	602.9
September	143.9	286.9	28.1	8.9	52.2	146.1	288.2	27.9	8.8	52.4	603.3
October	145.0	291.4	27.1	8.5	52.7	145.9	287.9	27.9	8.8	52.3	603.7
November	146.3	290.2	28.3	8.9	52.7	146.1	287.1	28.1	8.9	52.2	604.1
December	149.2	283.8	27.4	8.8	51.5	146.5	286.0	28.3	9.0	52.0	604.5
1998											
January	146.9	281.7	30.3	9.7	51.6	147.2	284.9	28.7	9.1	51.8	604.8
PERSONS											
1996											
November	469.0	656.7	69.3	9.5	61.5	470.3	658.7	69.2	9.5	61.7	1 179.6
December	472.0	657.8	69.8	9.6	61.6	470.9	659.5	68.9	9.5	61.7	1 180.3
1997											
January	473.6	659.7	67.3	9.3	61.6	471.2	660.7	68.8	9.4	61.8	1 180.8
February	470.6	662.7	68.4	9.4	61.9	471.5	661.7	69.1	9.5	61.9	1 181.2
March	470.3	667.5	69.9	9.5	62.4	471.8	662.4	69.7	9.5	62.0	1 181.7
April	472.8	660.8	71.0	9.7	61.9	472.3	662.6	70.4	9.6	62.0	1 182.3
May	468.7	658.4	71.3	9.8	61.7	472.8	662.4	71.0	9.7	62.0	1 183.0
June	477.2	665.3	71.4	9.7	62.2	472.8	662.3	71.3	9.7	62.0	1 183.6
July	475.0	661.2	72.1	9.8	61.9	472.4	662.6	71.5	9.7	62.0	1 184.4
August	470.9	661.9	69.8	9.5	61.7	471.5	662.9	71.4	9.7	62.0	1 185.2
September	469.3	662.5	72.2	9.8	61.9	470.6	662.8	71.3	9.7	61.9	1 186.0
October	467.0	665.5	70.8	9.6	62.0	470.2	661.8	71.3	9.7	61.8	1 186.9
November	470.2	662.7	72.3	9.8	61.9	470.4	660.1	71.4	9.8	61.6	1 187.7
December	473.0	655.5	70.3	9.7	61.1	470.9	658.0	71.4	9.8	61.4	1 188.5
1998											
January	473.8	651.9	72.1	10.0	60.9	471.8	656.2	71.5	9.8	61.2	1 189.1

(a) Trend estimates for July 1997 to December 1997 have been revised.

LABOUR FORCE STATUS (AGED 15 AND OVER)–Western Australia(a)

SEASONALLY ADJUSTED.....

TREND.....

Month	SEASONALLY ADJUSTED.....					TREND.....					Civilian population aged 15 and over '000
	Employed full time '000	Total employed '000	Total unemployed '000	Unemp- loyment rate %	Partic- ipation rate %	Employed full time '000	Total employed '000	Total unemployed '000	Unemp- loyment rate %	Partic- ipation rate %	
MALES											
1996											
November	429.9	480.3	41.9	8.0	75.8	429.8	483.8	41.3	7.9	76.3	688.6
December	428.5	483.7	41.3	7.9	76.1	431.1	485.7	40.2	7.6	76.2	689.9
1997											
January	434.3	491.4	36.7	7.0	76.4	432.4	487.7	38.9	7.4	76.2	691.0
February	435.9	491.2	38.4	7.3	76.5	433.6	489.5	37.9	7.2	76.2	692.1
March	433.0	490.2	37.4	7.1	76.1	434.4	490.9	37.2	7.0	76.2	693.2
April	434.6	490.4	36.2	6.9	75.8	435.4	491.8	37.2	7.0	76.2	694.5
May	436.1	492.0	37.2	7.0	76.1	436.4	492.4	37.6	7.1	76.2	695.9
June	437.5	495.5	38.2	7.2	76.5	437.5	493.0	38.1	7.2	76.2	697.1
July	439.1	491.0	39.1	7.4	75.9	438.6	494.2	38.4	7.2	76.2	698.4
August	440.2	497.4	38.8	7.2	76.6	439.8	495.7	38.4	7.2	76.3	699.8
September	442.6	496.2	40.6	7.6	76.6	441.0	497.4	38.3	7.1	76.4	701.1
October	438.8	498.4	33.8	6.4	75.8	442.1	499.2	38.0	7.1	76.5	702.4
November	443.9	503.3	38.2	7.1	76.9	443.4	500.8	37.7	7.0	76.5	703.8
December	445.3	502.3	39.2	7.2	76.8	444.7	502.2	37.5	6.9	76.5	705.1
1998											
January	447.2	502.6	36.6	6.8	76.4	445.8	503.4	37.3	6.9	76.6	706.1
FEMALES											
1996											
November	195.3	364.0	27.8	7.1	56.3	196.5	365.3	29.1	7.4	56.7	695.5
December	197.6	366.5	29.6	7.5	56.8	194.8	365.0	30.2	7.7	56.7	696.9
1997											
January	194.8	364.5	33.4	8.4	57.0	193.0	364.0	31.3	7.9	56.6	698.0
February	189.7	366.5	32.3	8.1	57.0	191.4	362.4	31.6	8.0	56.4	699.1
March	187.8	359.4	31.6	8.1	55.8	190.3	360.2	31.2	8.0	55.9	700.3
April	191.7	356.8	31.5	8.1	55.4	190.0	358.4	30.2	7.8	55.4	701.6
May	191.7	355.9	26.2	6.9	54.4	190.8	357.9	29.0	7.5	55.0	702.9
June	186.6	356.1	27.5	7.2	54.5	192.8	359.4	27.7	7.2	55.0	704.2
July	198.7	362.4	26.8	6.9	55.2	194.9	362.1	26.8	6.9	55.1	705.5
August	197.1	365.2	28.4	7.2	55.7	196.6	365.0	26.3	6.7	55.4	706.8
September	201.8	374.6	24.7	6.2	56.4	197.6	367.1	26.3	6.7	55.6	708.0
October	195.9	367.3	25.9	6.6	55.4	198.1	367.9	26.7	6.8	55.6	709.3
November	198.5	366.1	26.1	6.7	55.2	198.3	367.9	27.3	6.9	55.6	710.6
December	193.2	364.3	29.2	7.4	55.3	198.6	367.6	28.0	7.1	55.6	711.8
1998											
January	203.5	368.2	30.4	7.6	55.9	198.5	367.0	28.7	7.3	55.5	712.8
PERSONS											
1996											
November	625.2	844.3	69.7	7.6	66.0	626.3	849.1	70.4	7.7	66.4	1 384.1
December	626.0	850.2	70.9	7.7	66.4	625.9	850.7	70.4	7.6	66.4	1 386.7
1997											
January	629.1	855.9	70.1	7.6	66.7	625.4	851.7	70.2	7.6	66.4	1 389.0
February	625.6	857.7	70.8	7.6	66.7	625.0	851.9	69.5	7.5	66.2	1 391.2
March	620.8	849.6	69.0	7.5	65.9	624.7	851.1	68.4	7.4	66.0	1 393.5
April	626.3	847.3	67.8	7.4	65.5	625.4	850.1	67.4	7.3	65.7	1 396.1
May	627.8	847.9	63.5	7.0	65.2	627.2	850.3	66.5	7.3	65.5	1 398.8
June	624.1	851.6	65.7	7.2	65.5	630.3	852.4	65.8	7.2	65.5	1 401.4
July	637.8	853.4	66.0	7.2	65.5	633.5	856.3	65.1	7.1	65.6	1 403.9
August	637.3	862.6	67.2	7.2	66.1	636.4	860.8	64.7	7.0	65.8	1 406.5
September	644.3	870.8	65.3	7.0	66.4	638.5	864.5	64.6	7.0	65.9	1 409.1
October	634.7	865.7	59.8	6.5	65.6	640.2	867.0	64.7	6.9	66.0	1 411.7
November	642.4	869.4	64.3	6.9	66.0	641.8	868.7	64.9	7.0	66.0	1 414.3
December	638.5	866.6	68.4	7.3	66.0	643.3	869.8	65.4	7.0	66.0	1 416.9
1998											
January	650.7	870.9	67.0	7.1	66.1	644.3	870.5	66.0	7.0	66.0	1 418.9

(a) Trend estimates for July 1997 to December 1997 have been revised.

LABOUR FORCE STATUS (AGED 15 AND OVER)–Tasmania(a)

SEASONALLY ADJUSTED.....

TREND.....

Month	SEASONALLY ADJUSTED.....					TREND.....					Civilian population aged 15 and over '000
	Employed full time '000	Total employed '000	Total unemployed '000	Unemployment rate %	Participation rate %	Employed full time '000	Total employed '000	Total unemployed '000	Unemployment rate %	Participation rate %	
MALES											
1996											
November	100.0	114.8	12.8	10.1	70.3	100.1	114.4	13.9	10.8	70.7	181.5
December	99.4	113.0	14.7	11.5	70.3	99.7	113.7	14.0	10.9	70.3	181.6
1997											
January	98.7	113.4	13.6	10.7	69.9	99.3	113.1	14.1	11.1	70.1	181.6
February	100.2	112.1	14.7	11.6	69.8	98.9	112.7	14.2	11.2	69.9	181.6
March	98.6	113.4	14.0	11.0	70.1	98.4	112.3	14.3	11.3	69.7	181.6
April	97.0	111.5	15.4	12.1	69.8	97.7	111.9	14.3	11.4	69.5	181.6
May	97.6	112.3	13.4	10.6	69.2	97.2	111.6	14.3	11.3	69.3	181.7
June	96.6	110.6	13.7	11.0	68.4	96.9	111.6	14.2	11.3	69.2	181.7
July	95.8	110.4	15.4	12.2	69.3	97.0	111.7	14.2	11.2	69.3	181.7
August	97.5	113.1	14.0	11.0	69.9	97.2	111.9	14.3	11.3	69.5	181.8
September	97.9	112.9	13.4	10.6	69.5	97.4	112.1	14.7	11.6	69.7	181.8
October	99.3	112.5	15.6	12.2	70.4	97.5	112.0	15.1	11.8	69.9	181.8
November	96.5	111.9	15.1	11.9	69.8	97.3	111.9	15.4	12.1	70.0	181.8
December	96.1	109.7	17.6	13.8	70.0	97.1	111.7	15.7	12.3	70.1	181.8
1998											
January	96.8	112.4	14.8	11.6	70.0	96.8	111.5	15.9	12.5	70.1	181.7
FEMALES											
1996											
November	43.1	84.0	9.4	10.1	49.8	42.0	84.1	9.4	10.1	49.8	187.7
December	41.6	82.6	9.0	9.8	48.8	41.8	83.8	9.4	10.1	49.6	187.8
1997											
January	41.1	84.5	9.3	9.9	49.9	41.6	83.6	9.3	10.0	49.5	187.8
February	40.6	83.3	9.5	10.3	49.4	41.4	83.3	9.3	10.0	49.3	187.8
March	40.6	82.6	9.7	10.5	49.2	41.2	82.9	9.2	10.0	49.0	187.8
April	42.0	83.3	8.3	9.1	48.7	40.8	82.3	9.2	10.0	48.7	187.8
May	42.0	82.3	9.3	10.2	48.8	40.2	81.6	9.3	10.2	48.4	187.9
June	39.0	79.4	9.8	11.0	47.5	39.5	80.9	9.5	10.5	48.1	187.9
July	37.7	80.1	8.7	9.8	47.3	39.0	80.3	9.8	10.8	47.9	187.9
August	38.3	81.8	10.2	11.0	48.9	39.0	80.2	9.9	11.0	48.0	187.9
September	38.7	78.2	11.4	12.7	47.7	39.5	80.5	9.9	11.0	48.1	188.0
October	41.0	80.8	9.7	10.7	48.1	40.4	81.0	9.7	10.7	48.2	188.0
November	42.5	82.5	8.7	9.6	48.5	41.3	81.6	9.3	10.2	48.3	188.0
December	41.8	82.7	8.7	9.5	48.6	42.2	82.1	8.9	9.8	48.4	188.0
1998											
January	43.1	82.3	8.2	9.1	48.2	42.9	82.5	8.6	9.4	48.5	187.9
PERSONS											
1996											
November	143.1	198.8	22.3	10.1	59.9	142.2	198.4	23.3	10.5	60.1	369.2
December	141.0	195.6	23.7	10.8	59.4	141.5	197.5	23.3	10.6	59.8	369.4
1997											
January	139.8	197.8	22.9	10.4	59.8	140.9	196.8	23.4	10.6	59.6	369.4
February	140.8	195.4	24.2	11.0	59.5	140.3	196.0	23.5	10.7	59.4	369.4
March	139.2	196.0	23.7	10.8	59.5	139.5	195.2	23.5	10.7	59.2	369.4
April	139.1	194.7	23.6	10.8	59.1	138.5	194.2	23.5	10.8	58.9	369.5
May	139.6	194.5	22.7	10.4	58.8	137.4	193.2	23.5	10.9	58.7	369.5
June	135.5	189.9	23.5	11.0	57.8	136.5	192.5	23.6	10.9	58.5	369.6
July	133.5	190.6	24.1	11.2	58.1	136.0	192.1	23.9	11.1	58.4	369.7
August	135.8	194.9	24.2	11.0	59.2	136.2	192.1	24.3	11.2	58.5	369.7
September	136.5	191.1	24.8	11.5	58.4	136.9	192.5	24.6	11.3	58.7	369.8
October	140.4	193.3	25.3	11.6	59.1	137.8	193.0	24.7	11.4	58.9	369.8
November	138.9	194.4	23.8	10.9	59.0	138.6	193.4	24.7	11.3	59.0	369.8
December	137.9	192.4	26.2	12.0	59.1	139.3	193.8	24.6	11.3	59.1	369.8
1998											
January	139.9	194.7	23.0	10.6	58.9	139.8	194.0	24.5	11.2	59.1	369.6

(a) Trend estimates for July 1997 to December 1997 have been revised.

LABOUR FORCE STATUS (AGED 15 AND OVER)–Northern Territory(a)

TREND.....

Month	Employed full time '000	Total employed '000	Total unemployed '000	Unemployment rate %	Participation rate %	Civilian population aged 15 and over '000
MALES						
1996						
November	39.8	45.7	2.3	4.9	74.7	64.3
December	39.7	45.5	2.5	5.1	74.4	64.4
1997						
January	39.7	45.4	2.6	5.5	74.4	64.5
February	39.8	45.5	2.8	5.9	74.7	64.7
March	39.9	45.8	3.0	6.1	75.4	64.8
April	39.9	46.2	3.1	6.2	76.1	64.8
May	39.7	46.4	3.1	6.3	76.4	64.9
June	39.5	46.4	3.1	6.2	76.2	64.9
July	39.5	46.3	3.0	6.0	75.9	65.0
August	39.9	46.4	2.8	5.7	75.7	65.0
September	40.7	46.6	2.5	5.2	75.6	65.0
October	41.7	47.1	2.3	4.6	75.7	65.2
November	42.8	47.8	2.0	4.1	76.1	65.4
December	43.7	48.4	1.8	3.7	76.6	65.6
1998						
January	44.5	49.0	1.7	3.4	77.0	65.9
FEMALES						
1996						
November	24.2	37.2	2.0	5.2	62.4	62.8
December	23.7	36.9	2.0	5.1	61.8	63.0
1997						
January	23.4	36.9	2.1	5.3	61.6	63.1
February	23.4	37.1	2.2	5.6	62.1	63.3
March	23.5	37.6	2.4	5.9	62.9	63.5
April	23.7	38.1	2.5	6.2	63.9	63.6
May	23.9	38.5	2.5	6.2	64.5	63.7
June	24.3	38.8	2.4	5.8	64.5	63.8
July	24.8	38.9	2.1	5.2	64.2	63.9
August	25.6	39.0	1.8	4.5	63.8	64.0
September	26.4	39.1	1.7	4.1	63.6	64.1
October	27.1	39.3	1.6	4.0	63.7	64.2
November	27.5	39.5	1.7	4.1	63.9	64.4
December	27.8	39.6	1.8	4.3	64.2	64.5
1998						
January	27.7	39.7	1.9	4.7	64.4	64.6
PERSONS						
1996						
November	63.9	82.9	4.4	5.0	68.6	127.1
December	63.3	82.4	4.4	5.1	68.2	127.4
1997						
January	63.1	82.2	4.7	5.4	68.1	127.7
February	63.2	82.6	5.0	5.7	68.4	128.0
March	63.4	83.4	5.4	6.0	69.2	128.2
April	63.6	84.3	5.6	6.2	70.0	128.4
May	63.6	85.0	5.6	6.2	70.5	128.6
June	63.7	85.2	5.5	6.0	70.4	128.7
July	64.3	85.2	5.1	5.6	70.1	128.9
August	65.4	85.4	4.6	5.2	69.8	129.0
September	67.0	85.7	4.2	4.7	69.7	129.1
October	68.8	86.4	3.9	4.3	69.7	129.4
November	70.3	87.2	3.7	4.1	70.1	129.8
December	71.5	88.0	3.6	4.0	70.4	130.1
1998						
January	72.3	88.7	3.7	4.0	70.7	130.5

(a) Trend estimates for July 1997 to December 1997 have been revised. Estimates for the most recent three months may be subject to significant revisions as data for later months become available.

LABOUR FORCE STATUS (AGED 15 AND OVER)—Australian Capital Territory(a)

TREND.....

Month	Employed full time '000	Total employed '000	Total unemployed '000	Unemp- loyment rate %	Partic- ipation rate %	Civilian population aged 15 and over '000
MALES						
1996						
November	71.8	82.3	7.9	8.7	78.6	114.7
December	71.5	82.0	7.9	8.8	78.3	114.9
1997						
January	71.4	82.0	7.8	8.7	78.1	115.0
February	71.4	82.3	7.6	8.5	78.1	115.1
March	71.6	82.8	7.3	8.1	78.2	115.3
April	71.9	83.5	7.0	7.7	78.5	115.3
May	72.4	84.2	6.7	7.4	78.8	115.3
June	73.0	84.7	6.7	7.4	79.3	115.3
July	73.3	85.0	7.0	7.6	79.7	115.4
August	73.5	85.0	7.3	7.9	80.0	115.4
September	73.3	84.7	7.6	8.2	79.9	115.5
October	73.0	84.4	7.7	8.4	79.7	115.6
November	72.5	84.0	7.7	8.4	79.3	115.7
December	72.1	83.7	7.6	8.4	78.8	115.8
1998						
January	71.6	83.3	7.6	8.3	78.4	116.0
FEMALES						
1996						
November	42.7	70.0	6.3	8.3	64.0	119.2
December	43.1	70.5	5.8	7.7	64.0	119.2
1997						
January	44.0	71.6	5.4	7.0	64.5	119.3
February	45.1	72.9	5.0	6.5	65.3	119.4
March	46.3	74.0	4.9	6.2	66.1	119.4
April	47.0	74.7	5.1	6.4	66.8	119.4
May	47.3	74.7	5.4	6.8	67.1	119.4
June	47.2	74.1	5.9	7.3	67.0	119.4
July	47.2	73.3	6.2	7.8	66.6	119.4
August	47.1	72.5	6.4	8.1	66.1	119.4
September	47.1	71.8	6.4	8.2	65.6	119.3
October	46.9	71.3	6.3	8.1	65.0	119.5
November	46.4	70.8	6.2	8.1	64.4	119.6
December	45.8	70.5	6.1	8.0	64.0	119.7
1998						
January	45.2	70.2	6.0	7.9	63.6	119.8
PERSONS						
1996						
November	114.5	152.2	14.2	8.5	71.1	233.9
December	114.6	152.6	13.7	8.3	71.0	234.1
1997						
January	115.3	153.6	13.2	7.9	71.2	234.3
February	116.5	155.2	12.7	7.5	71.6	234.5
March	117.8	156.9	12.2	7.2	72.0	234.7
April	118.9	158.2	12.0	7.1	72.5	234.7
May	119.7	158.8	12.2	7.1	72.9	234.7
June	120.2	158.8	12.6	7.4	73.0	234.8
July	120.5	158.3	13.2	7.7	73.1	234.8
August	120.6	157.5	13.7	8.0	72.9	234.8
September	120.4	156.6	14.0	8.2	72.6	234.8
October	119.8	155.7	14.0	8.3	72.2	235.1
November	119.0	154.9	13.9	8.3	71.7	235.3
December	117.9	154.1	13.8	8.2	71.3	235.6
1998						
January	116.8	153.5	13.6	8.1	70.9	235.8

(a) Trend estimates for July 1997 to December 1997 have been revised.

Estimates for the most recent three months may be subject to significant revisions as data for later months become available.

EXPLANATORY NOTES

INTRODUCTION

1 This publication contains preliminary estimates of the civilian labour force derived from the Labour Force Survey component of the monthly population survey. Estimates for the current month are preliminary and subject to revision. Revised estimates for the current month and more detailed estimates will be published in *Labour Force, Australia* (6203.0).

MONTHLY POPULATION SURVEY

2 The population survey is based on a multi-stage area sample of private dwellings (currently about 30,000 houses, flats, etc.) and a list sample of non-private dwellings (hotels, motels, etc.), and covers about 0.5% of the population of Australia. The information is obtained from the occupants of selected dwellings by specially trained interviewers. The interviews are generally conducted during the two weeks beginning on the Monday between the 6th and 12th of each month. The information obtained relates to the week before the interview (i.e. the reference week).

TELEPHONE INTERVIEWING

3 The ABS has introduced the use of telephone interviewing into the Labour Force Survey. Households selected for the Labour Force Survey are interviewed each month for 8 months, with one eighth of the sample being replaced each month. The first interview will continue to be conducted face-to-face. Subsequent interviews will then be conducted by telephone (if acceptable to the respondent). Telephone interviewing was phased in for each new sample group from August 1996 to February 1997.

4 During the period of implementation, the new method produced different estimates than would have been obtained under the old methodology. The effect peaked in November 1996, when it is estimated that the published estimate of total employment was about 36,000 to 48,000 lower than would have been measured under the old methodology. The effect dissipated over the final months of implementation and was no longer discernible from February 1997. Therefore, the estimates for February 1997 and onwards are directly comparable to estimates for periods prior to August 1996.

SCOPE OF SURVEY

5 The Labour Force Survey includes all persons aged 15 and over except members of the permanent defence forces, certain diplomatic personnel of overseas governments customarily excluded from census and estimated populations, overseas residents in Australia, and members of non-Australian defence forces (and their dependants) stationed in Australia.

COVERAGE

6 In the Labour Force Survey, coverage rules are applied which aim to ensure that each person is associated with only one dwelling, and hence has only one chance of selection. The coverage rules are necessarily a balance between theoretical and operational considerations. Nevertheless, the chance of a person being enumerated at two separate dwellings in the survey is considered to be negligible.

POPULATION BENCHMARKS

7 Labour Force Survey estimates are calculated in such a way as to add up to independent estimates of the civilian population aged 15 and over (population benchmarks). From February 1994, labour force estimates have been compiled using benchmarks based on the results of the 1991 Census of Population and Housing. Small revisions were made to many of the historical estimates from January 1989 to January 1994.

REVISION OF SERIES

8 From April 1986, the definition of employed persons was changed to include persons who worked without pay between 1 and 14 hours per week in a family business or on a farm (i.e. contributing family workers). For further information, see paragraphs 36 and 37 of the Explanatory Notes to the February 1987 issue of *Labour Force, Australia* (6203.0).

EXPLANATORY NOTES

SURVEY SAMPLE REDESIGN

9 The Labour Force Survey sample has been reselected using information collected in the 1996 Census of Population and Housing.

10 The bulk of the new sample will be phased in over the period September 1997 to April 1998, with one eighth of this portion of the sample being introduced every month. The remainder of the sample (about 15% of the total), which covers less settled areas of Australia and non-private dwellings was rotated in full for New South Wales, Victoria, Tasmania, Northern Territory and Australian Capital Territory in September 1997, and for Queensland, South Australia and Western Australia in October 1997. Such a pattern of implementation means that any changes to labour force estimates due to differences between the two samples, or any other influences, will be spread over the eight months.

11 For further details, see *Information Paper: Labour Force Survey Sample Design* (6269.0).

RELIABILITY OF ESTIMATES

12 Two types of error are possible in an estimate based on a sample survey: sampling error and non-sampling error.

Sampling error occurs because a sample, rather than the entire population, is surveyed. One measure of the likely difference resulting from not including all dwellings in the survey is given by the standard error. There are about two chances in three that a sample estimate will differ by less than one standard error from the figure that would have been obtained if all dwellings had been included in the survey, and about nineteen chances in twenty that the difference will be less than two standard errors. Standard errors of estimates for the latest month and of estimates of movements since the previous month are shown on pages 30 and 31. Standard errors of other estimates and other movements may be determined by using information in the Technical Notes in *Labour Force, Australia* (6203.0).

Non sampling error arises from inaccuracies in collecting, recording and processing the data. Every effort is made to minimise reporting error by the careful design of questionnaires, intensive training and supervision of interviewers, and efficient data processing procedures.

SEASONAL ADJUSTMENT AND TREND ESTIMATION

13 Seasonally adjusted series are published in Tables 2, 5 and 12 to 17. Seasonal factors are reviewed annually to take account of each additional year's original data. The results of the latest review were used to compile the revised seasonally adjusted and trend estimates given in this publication. Information about the method of adjustment and revised seasonally adjusted and trend estimates for all months from January 1991 were published in an appendix to the February 1996 issue of *Labour Force, Australia* (6203.0).

14 Seasonal adjustment is a means of removing the estimated effects of normal seasonal variation from the series so that the effects of other influences on the series can be more clearly recognised. Seasonal adjustment does not aim to remove the irregular or non-seasonal influences which may be present in any particular month. This means that month-to-month movements of the seasonally adjusted estimates may not be reliable indicators of trend behaviour. For example, irregular factors unrelated to the trend account for more than half the seasonally adjusted movement with the following frequency:

Employment: 5 in 10 monthly movements

Unemployment: 7 in 10 monthly movements

Unemployment rate: 7 in 10 monthly movements

Participation rate: 9 in 10 monthly movements.

EXPLANATORY NOTES

SEASONAL ADJUSTMENT AND TREND ESTIMATION *continued*

15 The smoothing of seasonally adjusted series reduces the impact of the irregular component of the seasonally adjusted series, and creates trend estimates. These trend estimates are derived by applying a 13-term Henderson-weighted moving average to all months except the last six. The last six monthly trend estimates are obtained by applying surrogates of the Henderson average to the seasonally adjusted series. Trend series are used to analyse the underlying behaviour of the series over time. These are published in tables 3, 6 and 12 to 19.

16 While this smoothing technique enables estimates to be produced for the latest month, it does result in revisions to the most recent months as additional observations become available. Generally, subsequent revisions become smaller, and after three months have a negligible impact on the series. There will also be revisions as a result of the annual review of seasonal factors.

17 Trend estimates are published for the Northern Territory in table 18 and for the Australian Capital Territory in table 19. Unadjusted series for the two Territories have shown, historically, a high degree of variability, which can lead to considerable revisions to the seasonally adjusted estimates after each annual seasonal factor re-analysis. Seasonally adjusted estimates are not currently published for the two Territories. The most recent six months trend estimates are subject to revision. For the three most recent months, the revision may be relatively large. Inferences about trends drawn from smoothed seasonally adjusted (trend) estimates for months earlier than the latest three months are unlikely to be affected by month to month revisions. They may be affected by revision resulting from the annual re-analysis of seasonal factors.

18 For further information, see *A Guide to Interpreting Time Series — Monitoring 'Trends': an Overview* (1348.0) or contact the Assistant Director, Time Series Analysis on (06) 252 6345.

RELATED PUBLICATIONS

19 Users may also wish to refer to *Labour Force, Australia* (6203.0). This publication contains a detailed list of related publications which are available from ABS Bookshops.

20 Current publications produced by the ABS are listed in the *Catalogue of Publications and Products* (1101.0). The ABS also issues, on Tuesdays and Fridays, a *Release Advice* (1105.0) which lists publications to be released in the next few days. The Catalogue and Release Advice are available from any ABS office.

UNPUBLISHED STATISTICS

21 As well as the statistics included in this and related publications, the ABS may have other relevant unpublished data available. Inquiries should be made to Donna Maurer on 02 6252 6525 or to any ABS office.

EFFECTS OF ROUNDING

22 Estimates have been rounded and discrepancies may occur between sums of the component items and totals.

23 Estimates of movement shown in this publication are obtained by taking the difference of unrounded estimates. The movement estimate is then rounded to one decimal place. Therefore where a discrepancy occurs between the reported movement and the difference of the rounded estimates, the reported movement will be more accurate.

SYMBOLS AND OTHER USAGES

- * subject to sampling variability too high for most practical uses. See the Technical Notes in 6203.0 for more details.
- .. not applicable
- r revised
- pts percentage points

GLOSSARY

Actively looking for work	Includes writing, telephoning or applying in person to an employer for work; answering a newspaper advertisement for a job; checking factory or Commonwealth Employment Service noticeboards; being registered with the Commonwealth Employment Service; checking or registering with any other employment agency; advertising or tendering for work; and contacting friends or relatives.
Attending school	Persons aged 15 to 19 enrolled full time at secondary or high schools in the reference week.
Attending tertiary educational institution full time	Persons aged 15 to 24 enrolled full time at a TAFE college, university, or other educational institution in the reference week.
Employed	Persons aged 15 and over who, during the reference week: <ul style="list-style-type: none">■ worked for one hour or more for pay, profit, commission or payment in kind in a job or business, or on a farm (comprising employees, employers and own account workers); or■ worked for one hour or more without pay in a family business or on a farm (i.e. contributing family workers); or■ were employees who had a job but were not at work and were:<ul style="list-style-type: none">■ on paid leave, on leave without pay for less than four weeks up to the end of the reference week,■ stood down without pay because of bad weather or plant breakdown at their place of employment for less than four weeks up to the end of the reference week,■ on strike or locked out,■ on workers' compensation and expected to be returning to their job, or■ receiving wages or salary while undertaking full-time study; or■ were employers, own account workers or contributing family workers who had a job, business or farm, but were not at work.
Full-time workers	Employed persons who usually worked 35 hours or more a week (in all jobs) and those who, although usually working less than 35 hours a week, worked 35 hours or more during the reference week
Labour force	For any group, persons who were employed or unemployed, as defined.
Labour force status	A classification of the civilian population aged 15 and over into employed, unemployed or not in the labour force, as defined. The definitions conform closely to the international standard definitions adopted by the International Conferences of Labour Statisticians.
Not in the labour force	Persons who were not in the categories employed or unemployed as defined.
Participation rate	For any group, the labour force expressed as a percentage of the civilian population aged 15 and over in the same group.
Part-time workers	Employed persons who usually worked less than 35 hours a week and who did so during the reference week.
Seasonally adjusted series	A time series of estimates with the estimated effects of normal seasonal variation removed. See Explanatory Note 13 to 14 for more detail.
Trend series	A smoothed seasonally adjusted series of estimates. See Explanatory Notes 15 to 17 for more detail.

G L O S S A R Y

Unemployed	Persons aged 15 and over who were not employed during the reference week, and: <ul style="list-style-type: none">■ had actively looked for full-time or part-time work at any time in the four weeks up to the end of the reference week and:<ul style="list-style-type: none">■ were available for work in the reference week, or would have been available except for temporary illness (i.e. lasting for less than four weeks to the end of the reference week), or■ were waiting to start a new job within four weeks from the end of the reference week and would have started in the reference week if the job had been available then; or■ were waiting to be called back to a full-time or part-time job from which they had been stood down without pay for less than four weeks up to the end of the reference week (including the whole of the reference week) for reasons other than bad weather or plant breakdown.
Unemployed looking for first full-time job	Unemployed persons looking for full-time work (as defined above) who had never worked full time for two weeks or more
Unemployed looking for full-time work	Unemployed persons who actively looked for full-time work, or were to resume a full-time job from which they had been stood down.
Unemployed looking for part-time work	Unemployed persons who had actively looked for part-time work only, or were to resume a part-time job from which they had been stood down.
Unemployment rate	For any group, the number of unemployed persons expressed as a percentage of the labour force in the same group.
Unemployment to population ratio	For any group, the number of unemployed persons expressed as a percentage of the civilian population in the same group.

STANDARD ERRORS

The estimates in this publication are based on information gained from the occupants of a sample survey of dwellings. Because the entire population is not surveyed, the published estimates are subject to sampling error. The most common way of quantifying such sampling error is to calculate the standard error for the published estimate or statistic.

LEVEL ESTIMATES

To illustrate, let us say the published level estimate for employed persons aged 15 to 19 is 500,000. The calculated standard error in this case is 9,000. The standard error is then used to interpret the level estimate of 500,000. For instance, the standard error of 9,000 indicates that:

- There are approximately two chances in three that the real value falls within the range 491,000 to 509,000 ($500,000 \pm 9,000$)
- There are approximately nineteen chances in twenty that the real value falls within the range 482,000 to 518,000 ($500,000 \pm 18,000$).

The real value in this case is the result we would obtain if we could enumerate the total population.

The following tables show the standard errors for this month's level estimates.

	EMPLOYED.....			UNEMPLOYED.....			Labour force	Not in labour force	Unemployment rate	Participation rate
	Full time	Part time	Total	Looking for f/t work	Looking for p/t work	Total				
	'000	'000	'000	'000	'000	'000				
NSW	14.7	9.6	16.0	6.2	3.4	6.7	16.4	14.1	0.2	0.3
Vic.	12.1	8.2	13.3	5.3	3.3	5.9	13.7	11.6	0.3	0.4
Qld	9.5	6.4	10.5	4.2	2.3	4.6	10.8	8.8	0.3	0.4
SA	5.1	3.6	5.7	2.5	1.4	2.7	5.9	5.1	0.4	0.5
WA	6.4	4.3	7.1	2.6	1.4	2.8	7.3	5.8	0.3	0.5
Tas.	1.7	1.3	1.8	1.0	0.6	1.0	1.8	1.7	0.5	0.5
NT	2.0	1.1	2.2	0.5	0.3	0.6	2.3	1.6	0.6	1.8
ACT	1.6	1.0	1.8	0.7	0.4	0.7	1.8	1.4	0.4	0.8
Males	19.9	9.3	20.8	8.4	3.7	8.8	21.4	15.1	0.2	0.3
Females	15.5	13.7	18.7	6.6	4.7	7.7	19.3	18.7	0.2	0.3
Persons	22.8	15.3	25.0	10.0	5.7	10.9	25.8	21.7	0.1	0.2

	NUMBER OF UNEMPLOYED PERSONS.....					UNEMPLOYMENT RATE.....				
	Aged 15-19 looking for f/t work	Aged 20 and over looking for f/t work	Total looking for f/t work	Looking for p/t work	Total	Aged 15-19 looking for f/t work	Aged 20 and over looking for f/t work	Total looking for f/t work	Looking for p/t work	Total
	'000	'000	'000	'000	'000	pts	pts	pts	pts	pts
NSW	3.1	5.7	6.2	3.4	6.7	2.5	0.3	0.3	0.5	0.2
Vic.	2.5	5.0	5.3	3.3	5.9	3.5	0.3	0.3	0.6	0.3
Qld	2.0	3.9	4.2	2.3	4.6	2.7	0.3	0.3	0.5	0.3
SA	1.1	2.3	2.5	1.4	2.7	3.9	0.5	0.5	0.7	0.4
WA	1.3	2.4	2.6	1.4	2.8	3.0	0.4	0.4	0.6	0.3
Tas.	0.5	0.9	1.0	0.6	1.0	4.8	0.6	0.6	1.0	0.5
NT	0.2	0.4	0.5	0.3	0.6	4.9	0.7	0.7	1.8	0.6
ACT	0.4	0.6	0.7	0.4	0.7	7.7	0.5	0.5	1.1	0.4
Males	3.7	7.9	8.4	3.7	8.8	1.7	0.2	0.2	0.6	0.2
Females	3.5	6.0	6.6	4.7	7.7	2.4	0.3	0.3	0.3	0.2
Persons	4.8	9.3	10.0	5.7	10.9	1.3	0.1	0.1	0.3	0.1

STANDARD ERRORS *continued*

MOVEMENT ESTIMATES

The following example illustrates how to use the standard error to interpret a movement estimate. Let us say that one month the published level estimate for females employed part time in Australia is 1,387,000; the next month the published level estimate is 1,400,000. The calculated standard error for the movement estimate is 10,500. The standard error is then used to interpret the published movement estimate of 13,000. For instance, the standard error of 10,500 indicates that:

- There are approximately two chances in three that the real movement over the two month period falls within the range 2,500 to 23,500 (13,000 + or - 10,500)
- There are approximately nineteen chances in twenty that the real movement falls within the range -8,000 to 34,000 (13,000 + or - 21,000).

The following tables show the standard errors for this month's movement estimates.

	EMPLOYED.....			UNEMPLOYED.....			Labour force	Not in labour force	Unemployment rate	Participation rate
	Full time	Part time	Total	Looking for f/t work	Looking for p/t work	Total				
	'000	'000	'000	'000	'000	'000				
NSW	11.4	7.5	12.6	4.8	2.8	5.1	13.0	10.9	0.2	0.3
Vic.	8.8	6.0	9.9	3.8	2.5	4.2	10.2	8.4	0.2	0.3
Qld	6.6	4.5	7.3	3.1	1.9	3.3	7.5	6.1	0.2	0.3
SA	3.5	2.5	3.9	1.7	1.0	1.8	4.1	3.5	0.3	0.3
WA	4.6	3.2	5.1	2.0	1.2	2.1	5.2	4.1	0.2	0.4
Tas.	1.5	1.1	1.7	0.8	0.5	0.8	1.8	1.5	0.4	0.5
NT	1.3	0.7	1.4	0.3	0.2	0.4	1.5	1.0	0.4	1.1
ACT	1.2	0.8	1.4	0.5	0.3	0.6	1.4	1.0	0.3	0.6
Males	15.2	7.2	16.0	6.4	3.2	6.7	16.5	11.3	0.1	0.2
Females	11.7	10.5	14.4	5.1	3.8	5.9	14.9	14.2	0.2	0.2
Persons	17.7	11.8	19.7	7.5	4.5	8.2	20.4	16.7	0.1	0.1

	NUMBER OF UNEMPLOYED PERSONS.....					UNEMPLOYMENT RATE.....				
	Aged 15-19 looking for f/t work	Aged 20 and over looking for f/t work	Total looking for f/t work	Looking for p/t work	Total	Aged 15-19 looking for f/t work	Aged 20 and over looking for f/t work	Total looking for f/t work	Looking for p/t work	Total
	'000	'000	'000	'000	'000	pts	pts	pts	pts	pts
NSW	2.5	4.4	4.8	2.8	5.1	2.1	0.2	0.2	0.4	0.2
Vic.	2.0	3.6	3.8	2.5	4.2	2.7	0.2	0.2	0.4	0.2
Qld	1.7	2.9	3.1	1.9	3.3	2.4	0.2	0.2	0.4	0.2
SA	0.8	1.6	1.7	1.0	1.8	3.2	0.3	0.3	0.5	0.3
WA	1.1	1.8	2.0	1.2	2.1	2.5	0.3	0.3	0.5	0.2
Tas.	0.4	0.7	0.8	0.5	0.8	3.7	0.5	0.5	0.8	0.4
NT	0.2	0.3	0.3	0.2	0.4	3.6	0.5	0.5	1.3	0.4
ACT	0.3	0.5	0.5	0.3	0.6	6.4	0.4	0.4	0.9	0.3
Males	3.1	6.0	6.4	3.2	6.7	1.4	0.1	0.1	0.5	0.1
Females	2.9	4.7	5.1	3.8	5.9	2.1	0.2	0.2	0.2	0.2
Persons	3.9	7.0	7.5	4.5	8.2	1.1	0.1	0.1	0.2	0.1

WHAT IF...? REVISIONS TO TREND ESTIMATES

EFFECT OF NEW SEASONALLY ADJUSTED ESTIMATES ON TREND ESTIMATES

Each time new seasonally adjusted estimates become available, trend estimates are revised (see paragraphs 13 and 14 of Explanatory Notes).

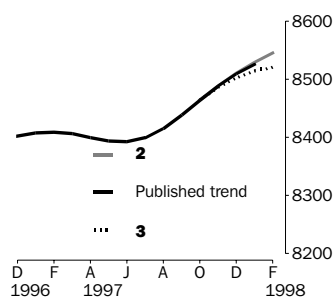
TREND REVISIONS

The examples in the tables below show four illustrative scenarios and the consequent revisions to previous trend estimates of employment and unemployment rate.

- 1** The February seasonally adjusted estimate is the same as the January estimate.
- 2** The February seasonally adjusted estimate is higher than the January estimate by:
 - +0.33% for employment
 - +2.2% for the unemployment rate
- 3** The February seasonally adjusted estimate is lower than the January estimate by:
 - -0.33% for employment
 - -2.2% for the unemployment rate
- 4** The February seasonally adjusted estimate results in a revised January trend estimate which is identical to the new February trend estimate.

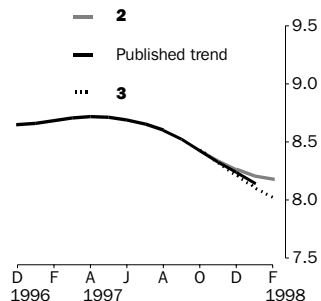
The percentage changes of 0.33% and 2.2% were chosen because they represent the average absolute monthly percentage changes in employment and the unemployment rate respectively.

EMPLOYMENT ('000)



		WHAT IF NEXT MONTH'S SEASONALLY ADJUSTED ESTIMATE IS:			
		1	2	3	4
		8 517.6	8 545.8	8 489.5	8 436.5
		<i>i.e. the same as Jan 1998</i>	<i>i.e. rises by 0.33%</i>	<i>i.e. falls by 0.33%</i>	<i>i.e. same trend for Jan & Feb</i>
TREND as PUBLISHED					
1997	November	8 488.8	8 488.2	8 489.4	8 486.9
	December	8 509.8	8 507.4	8 511.6	8 503.3
	January	8 526.6	8 522.0	8 529.9	8 514.2
	February (new)	—	8 533.6	8 545.4	8 521.7

UNEMPLOYMENT RATE (%)



		WHAT IF NEXT MONTH'S SEASONALLY ADJUSTED ESTIMATE IS:			
		1	2	3	4
		8.2	8.3	8.0	8.6
		<i>i.e. the same as Jan 1998</i>	<i>i.e. rises by 2.2%</i>	<i>i.e. falls by 2.2%</i>	<i>i.e. same trend for Jan & Feb</i>
TREND as PUBLISHED					
1997	November	8.3	8.3	8.3	8.4
	December	8.2	8.2	8.2	8.3
	January	8.1	8.2	8.1	8.3
	February (new)	—	8.1	8.2	8.0

The ABS publishes a wide range of information on Australia's economic and social conditions. A catalogue of publications and products is available from any of our offices (see below).

INFORMATION CONSULTANCY SERVICES

Information tailored to special needs of clients can be obtained from the Information Consultancy Service available at ABS Offices (see below).

ABS PRODUCTS

A large number of ABS products is available from the ABS Bookshops (see below). The ABS also provides a subscription service – you can telephone the ABS Subscription Service Australia wide toll free on 1300 3663 23.

ELECTRONIC SERVICES

A large range of data is available via on-line services, diskette, magnetic tape, tape cartridge and CD ROM. For more details about our electronic data services, contact any ABS office (see below) or e-mail us at:

- client.services@abs.gov.au

GENERAL SALES AND INQUIRIES

- Sydney 02 9268 4611
 - Melbourne 03 9615 7755
 - Brisbane 07 3222 6351
 - Perth 08 9360 5140
 - Adelaide 08 8237 7100
 - Hobart 03 6222 5800
 - Darwin 08 8943 2111
 - Canberra 02 6252 6627
-
- Information Services, ABS
PO Box 10, Belconnen ACT 2616



2620200001980

ISSN 1031-038X

RRP \$17.50